



SZABO SCANDIC

Part of Europa Biosite

Produktinformation



Forschungsprodukte & Biochemikalien



Zellkultur & Verbrauchsmaterial



Diagnostik & molekulare Diagnostik



Laborgeräte & Service

Weitere Information auf den folgenden Seiten!
See the following pages for more information!



Lieferung & Zahlungsart

siehe unsere [Liefer- und Versandbedingungen](#)

Zuschläge

- Mindermengenzuschlag
- Trockeneiszuschlag
- Gefahrgutzuschlag
- Expressversand

SZABO-SCANDIC HandelsgmbH

Quellenstraße 110, A-1100 Wien

T. +43(0)1 489 3961-0

F. +43(0)1 489 3961-7

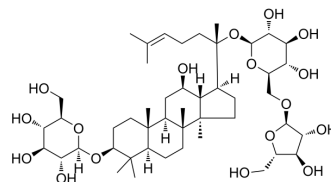
mail@szabo-scandic.com

www.szabo-scandic.com

[linkedin.com/company/szaboscandic](https://www.linkedin.com/company/szaboscandic) 

Notoginsenoside Fe

Cat. No.:	HY-N0046		
CAS No.:	88105-29-7		
Molecular Formula:	C ₄₇ H ₈₀ O ₁₇		
Molecular Weight:	917.13		
Target:	Others		
Pathway:	Others		
Storage:	Powder	-20°C	3 years
		4°C	2 years
	In solvent	-80°C	6 months
		-20°C	1 month



SOLVENT & SOLUBILITY

In Vitro

H₂O : 50 mg/mL (54.52 mM; Need ultrasonic)

DMSO : < 1 mg/mL (ultrasonic;warming;heat to 60°C) (insoluble or slightly soluble)

	Solvent Concentration	Mass		
		1 mg	5 mg	10 mg
Preparing Stock Solutions	1 mM	1.0904 mL	5.4518 mL	10.9036 mL
	5 mM	0.2181 mL	1.0904 mL	2.1807 mL
	10 mM	0.1090 mL	0.5452 mL	1.0904 mL

Please refer to the solubility information to select the appropriate solvent.

BIOLOGICAL ACTIVITY

Description

Notoginsenoside Fe is a natural compound isolated from *Panax pseudo-ginseng*.

REFERENCES

- [1]. Li S, et al. Development of a method to screen and isolate potential xanthine oxidase inhibitors from *Panax japonicus* var via ultrafiltration liquid chromatography combined with counter-current chromatography. *Talanta*. 2015 Mar;134:665-73.
- [2]. He R, et al. Chemical constituents of leaves of *Panax japonicus* var. major. *Zhongguo Zhong Yao Za Zhi*. 2014 May;39(9):1635-8.

Caution: Product has not been fully validated for medical applications. For research use only.

Tel: 609-228-6898

Fax: 609-228-5909

E-mail: tech@MedChemExpress.com

Address: 1 Deer Park Dr, Suite Q, Monmouth Junction, NJ 08852, USA