



SZABO SCANDIC

Part of Europa Biosite

Produktinformation



Forschungsprodukte & Biochemikalien



Zellkultur & Verbrauchsmaterial



Diagnostik & molekulare Diagnostik



Laborgeräte & Service

Weitere Information auf den folgenden Seiten!
See the following pages for more information!



Lieferung & Zahlungsart

siehe unsere [Liefer- und Versandbedingungen](#)

Zuschläge

- Mindermengenzuschlag
- Trockeneiszuschlag
- Gefahrgutzuschlag
- Expressversand

SZABO-SCANDIC HandelsgmbH

Quellenstraße 110, A-1100 Wien

T. +43(0)1 489 3961-0

F. +43(0)1 489 3961-7

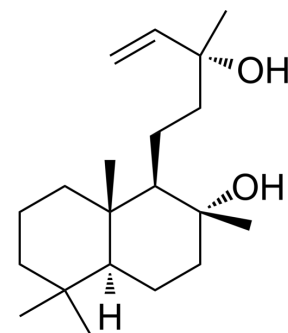
mail@szabo-scandic.com

www.szabo-scandic.com

[linkedin.com/company/szaboscandic](https://www.linkedin.com/company/szaboscandic) 

Sclareol

| | | | |
|---------------------------|--|-------|----------|
| Cat. No.: | HY-N0128 | | |
| CAS No.: | 515-03-7 | | |
| Molecular Formula: | C ₂₀ H ₃₆ O ₂ | | |
| Molecular Weight: | 308.5 | | |
| Target: | Apoptosis | | |
| Pathway: | Apoptosis | | |
| Storage: | Powder | -20°C | 3 years |
| | | 4°C | 2 years |
| | In solvent | -80°C | 6 months |
| | | -20°C | 1 month |



SOLVENT & SOLUBILITY

In Vitro

DMSO : 50 mg/mL (162.07 mM; ultrasonic and warming and heat to 60°C)

| Concentration | Solvent | Mass | | |
|---------------------------|---------|-----------|------------|------------|
| | | 1 mg | 5 mg | 10 mg |
| Preparing Stock Solutions | 1 mM | 3.2415 mL | 16.2075 mL | 32.4149 mL |
| | 5 mM | 0.6483 mL | 3.2415 mL | 6.4830 mL |
| | 10 mM | 0.3241 mL | 1.6207 mL | 3.2415 mL |

Please refer to the solubility information to select the appropriate solvent.

In Vivo

- Add each solvent one by one: 10% DMSO >> 40% PEG300 >> 5% Tween-80 >> 45% saline
Solubility: ≥ 2.5 mg/mL (8.10 mM); Clear solution
- Add each solvent one by one: 10% DMSO >> 90% (20% SBE-β-CD in saline)
Solubility: ≥ 2.5 mg/mL (8.10 mM); Clear solution
- Add each solvent one by one: 10% DMSO >> 90% corn oil
Solubility: ≥ 2.5 mg/mL (8.10 mM); Clear solution

BIOLOGICAL ACTIVITY

Description

Sclareol is isolated from *Salvia sclarea* with anticarcinogenic activity. Sclareol shows strong cytotoxic activity against mouse leukemia (P-388), human epidermal carcinoma (KB) cells and human leukemia cell lines. Sclareol induces cell apoptosis^[1].

In Vitro

Sclareol is cytotoxic to 13 of 14 human leukemia cell lines tested, with IC₅₀ values ranging from 6.0–24.2 μg/mL, but is not cytotoxic to peripheral blood mononuclear leukocytes within the same dose range^[1].

MCE has not independently confirmed the accuracy of these methods. They are for reference only.

CUSTOMER VALIDATION

- Phytother Res. 2023 Sep;37(9):3898-3912.

See more customer validations on www.MedChemExpress.com

REFERENCES

[1]. Robert Tisserand, et al. Sclareol. Constituent profiles

Caution: Product has not been fully validated for medical applications. For research use only.

Tel: 609-228-6898

Fax: 609-228-5909

E-mail: tech@MedChemExpress.com

Address: 1 Deer Park Dr, Suite Q, Monmouth Junction, NJ 08852, USA