



# SZABO SCANDIC

Part of Europa Biosite

## Produktinformation



Forschungsprodukte & Biochemikalien



Zellkultur & Verbrauchsmaterial



Diagnostik & molekulare Diagnostik



Laborgeräte & Service

Weitere Information auf den folgenden Seiten!  
See the following pages for more information!



### Lieferung & Zahlungsart

siehe unsere [Liefer- und Versandbedingungen](#)

### Zuschläge

- Mindermengenzuschlag
- Trockeneiszuschlag
- Gefahrgutzuschlag
- Expressversand

### SZABO-SCANDIC HandelsgmbH

Quellenstraße 110, A-1100 Wien

T. +43(0)1 489 3961-0

F. +43(0)1 489 3961-7

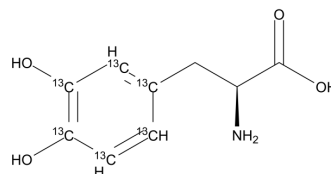
[mail@szabo-scandic.com](mailto:mail@szabo-scandic.com)

[www.szabo-scandic.com](http://www.szabo-scandic.com)

[linkedin.com/company/szaboscandic](https://www.linkedin.com/company/szaboscandic) 

## L-DOPA-<sup>13</sup>C<sub>6</sub>

<b>Cat. No.:</b>	HY-N0304S1
<b>CAS No.:</b>	201417-12-1
<b>Molecular Formula:</b>	C <sub>3</sub> <sup>13</sup> C <sub>6</sub> H <sub>11</sub> NO <sub>4</sub>
<b>Molecular Weight:</b>	203.14
<b>Target:</b>	Dopamine Receptor; Endogenous Metabolite
<b>Pathway:</b>	GPCR/G Protein; Neuronal Signaling; Metabolic Enzyme/Protease
<b>Storage:</b>	Please store the product under the recommended conditions in the Certificate of Analysis.



### BIOLOGICAL ACTIVITY

<b>Description</b>	L-DOPA- <sup>13</sup> C <sub>6</sub> is the <sup>13</sup> C-labeled L-DOPA <sup>[1]</sup> . L-DOPA (Levodopa) is an orally active metabolic precursor of neurotransmitters dopamine. L-DOPA can cross the blood-brain barrier and is converted into dopamine in the brain. L-DOPA has anti-allodynic effects and the potential for Parkinson's disease <sup>[2][3][4]</sup> .
<b>In Vitro</b>	Stable heavy isotopes of hydrogen, carbon, and other elements have been incorporated into drug molecules, largely as tracers for quantitation during the drug development process. Deuteration has gained attention because of its potential to affect the pharmacokinetic and metabolic profiles of drugs <sup>[1]</sup> . MCE has not independently confirmed the accuracy of these methods. They are for reference only.

### REFERENCES

- [1]. Russak EM, et al. Impact of Deuterium Substitution on the Pharmacokinetics of Pharmaceuticals. *Ann Pharmacother*. 2019 Feb;53(2):211-216.
- [2]. Hyland K, et al. Aromatic L-amino acid decarboxylase deficiency: diagnostic methodology. *Clin Chem*. 1992 Dec;38(12):2405-10.
- [3]. Merims D, et al. Dopamine dysregulation syndrome, addiction and behavioral changes in Parkinson's disease. *Parkinsonism Relat Disord*. 2008;14(4):273-80. Epub 2007 Nov 7.
- [4]. Perez-Pardo P, et al. Additive Effects of Levodopa and a Neurorestorative Diet in a Mouse Model of Parkinson's Disease. *Front Aging Neurosci*. 2018 Aug 31;10:237.
- [5]. Park HJ, et al. Anti-allodynic effects of levodopa in neuropathic rats. *Yonsei Med J*. 2013 Mar 15;54(2):330-5.

**Caution: Product has not been fully validated for medical applications. For research use only.**

Tel: 609-228-6898

Fax: 609-228-5909

E-mail: tech@MedChemExpress.com

Address: 1 Deer Park Dr, Suite Q, Monmouth Junction, NJ 08852, USA