



# SZABO SCANDIC

Part of Europa Biosite

## Produktinformation



Forschungsprodukte & Biochemikalien



Zellkultur & Verbrauchsmaterial



Diagnostik & molekulare Diagnostik



Laborgeräte & Service

Weitere Information auf den folgenden Seiten!  
See the following pages for more information!



### Lieferung & Zahlungsart

siehe unsere [Liefer- und Versandbedingungen](#)

### Zuschläge

- Mindermengenzuschlag
- Trockeneiszuschlag
- Gefahrgutzuschlag
- Expressversand

### SZABO-SCANDIC HandelsgmbH

Quellenstraße 110, A-1100 Wien

T. +43(0)1 489 3961-0

F. +43(0)1 489 3961-7

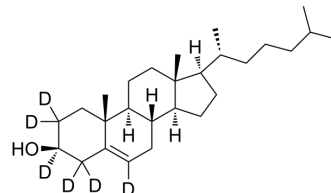
[mail@szabo-scandic.com](mailto:mail@szabo-scandic.com)

[www.szabo-scandic.com](http://www.szabo-scandic.com)

[linkedin.com/company/szaboscandic](https://www.linkedin.com/company/szaboscandic) 

## Cholesterol-d6-1

<b>Cat. No.:</b>	HY-N0322S2		
<b>CAS No.:</b>	92543-08-3		
<b>Molecular Formula:</b>	C <sub>27</sub> H <sub>40</sub> D <sub>6</sub> O		
<b>Molecular Weight:</b>	392.69		
<b>Target:</b>	Estrogen Receptor/ERR; Endogenous Metabolite; Isotope-Labeled Compounds		
<b>Pathway:</b>	Vitamin D Related/Nuclear Receptor; Metabolic Enzyme/Protease; Others		
<b>Storage:</b>	Powder	-20°C	3 years
		4°C	2 years
	In solvent	-80°C	6 months
		-20°C	1 month



### SOLVENT & SOLUBILITY

#### In Vitro

Ethanol : 10 mg/mL (25.47 mM; ultrasonic and warming and heat to 60°C)

Preparing Stock Solutions	Solvent		1 mg	5 mg	10 mg
	Concentration	Mass			
	1 mM		2.5465 mL	12.7327 mL	25.4654 mL
	5 mM		0.5093 mL	2.5465 mL	5.0931 mL
	10 mM		0.2547 mL	1.2733 mL	2.5465 mL

Please refer to the solubility information to select the appropriate solvent.

#### In Vivo

- Add each solvent one by one: 10% EtOH >> 40% PEG300 >> 5% Tween-80 >> 45% saline  
Solubility: ≥ 1 mg/mL (2.55 mM); Clear solution
- Add each solvent one by one: 10% EtOH >> 90% corn oil  
Solubility: ≥ 1 mg/mL (2.55 mM); Clear solution

### BIOLOGICAL ACTIVITY

#### Description

Cholesterol-d<sub>6</sub>-1 is the deuterium labeled Cholesterol. Cholesterol is the major sterol in mammals. It is making up 20-25% of structural component of the plasma membrane. Plasma membranes are highly permeable to water but relatively impermeable to ions and protons. Cholesterol plays an important role in determining the fluidity and permeability characteristics of the membrane as well as the function of both the transporters and signaling proteins<sup>[1][2]</sup>. Cholesterol is also an endogenous estrogen-related receptor α (ERRα) agonist<sup>[3]</sup>.

#### In Vitro

Stable heavy isotopes of hydrogen, carbon, and other elements have been incorporated into drug molecules, largely as tracers for quantitation during the drug development process. Deuteration has gained attention because of its potential to affect the pharmacokinetic and metabolic profiles of drugs<sup>[1]</sup>.  
MCE has not independently confirmed the accuracy of these methods. They are for reference only.

---

## REFERENCES

- [1]. Casaburi I, et al. Cholesterol as an Endogenous ERR $\alpha$  Agonist: A New Perspective to Cancer Treatment. *Front Endocrinol (Lausanne)*. 2018 Sep 11;9:525.
- [2]. Dietschy JM, et al. Thematic review series: brain Lipids. Cholesterol metabolism in the central nervous system during early development and in the mature animal. *J Lipid Res*. 2004 Aug;45(8):1375-97.
- [3]. Fukui K, et al. Effect of Cholesterol Reduction on Receptor Signaling in Neurons. *J Biol Chem*. 2015 Sep 14.
- [4]. Russak EM, et al. Impact of Deuterium Substitution on the Pharmacokinetics of Pharmaceuticals. *Ann Pharmacother*. 2019;53(2):211-216.
- 

**Caution: Product has not been fully validated for medical applications. For research use only.**

Tel: 609-228-6898

Fax: 609-228-5909

E-mail: [tech@MedChemExpress.com](mailto:tech@MedChemExpress.com)

Address: 1 Deer Park Dr, Suite Q, Monmouth Junction, NJ 08852, USA