



# SZABO SCANDIC

Part of Europa Biosite

## Produktinformation



Forschungsprodukte & Biochemikalien



Zellkultur & Verbrauchsmaterial



Diagnostik & molekulare Diagnostik



Laborgeräte & Service

Weitere Information auf den folgenden Seiten!  
See the following pages for more information!



### Lieferung & Zahlungsart

siehe unsere [Liefer- und Versandbedingungen](#)

### Zuschläge

- Mindermengenzuschlag
- Trockeneiszuschlag
- Gefahrgutzuschlag
- Expressversand

### SZABO-SCANDIC HandelsgmbH

Quellenstraße 110, A-1100 Wien

T. +43(0)1 489 3961-0

F. +43(0)1 489 3961-7

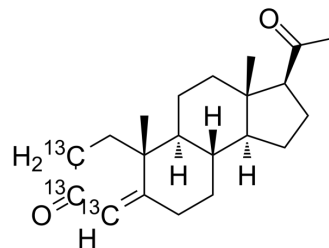
[mail@szabo-scandic.com](mailto:mail@szabo-scandic.com)

[www.szabo-scandic.com](http://www.szabo-scandic.com)

[linkedin.com/company/szaboscandic](https://www.linkedin.com/company/szaboscandic) 

## Progesterone-13C3

Cat. No.:	HY-N0437S2
CAS No.:	327048-87-3
Molecular Formula:	C <sub>18</sub> <sup>13</sup> C <sub>3</sub> H <sub>30</sub> O <sub>2</sub>
Molecular Weight:	317.44
Target:	Progesterone Receptor; Endogenous Metabolite
Pathway:	Others; Metabolic Enzyme/Protease
Storage:	Please store the product under the recommended conditions in the Certificate of Analysis.



### BIOLOGICAL ACTIVITY

<b>Description</b>	Progesterone-13C3 is the 13C-labeled Progesterone. Progesterone is a steroid hormone that regulates the menstrual cycle and is crucial for pregnancy.
<b>In Vitro</b>	Stable heavy isotopes of hydrogen, carbon, and other elements have been incorporated into drug molecules, largely as tracers for quantitation during the drug development process. Deuteration has gained attention because of its potential to affect the pharmacokinetic and metabolic profiles of drugs <sup>[1]</sup> . MCE has not independently confirmed the accuracy of these methods. They are for reference only.

### REFERENCES

- [1]. Russak EM, et al. Impact of Deuterium Substitution on the Pharmacokinetics of Pharmaceuticals. *Ann Pharmacother*. 2019;53(2):211-216.
- [2]. Schindler AE, et al. Classification and pharmacology of progestins. *Maturitas*. 2003 Dec 10;46 Suppl 1:S7-S16.
- [3]. Zava DT, et al. Estrogen and progestin bioactivity of foods, herbs, and spices. *Proc Soc Exp Biol Med*. 1998 Mar;217(3):369-78.
- [4]. Komesaroff PA, et al. Effects of wild yam extract on menopausal symptoms, lipids and sex hormones in healthy menopausal women. *Climacteric*. 2001 Jun;4(2):144-50.
- [5]. Girling JE, et al. Progesterone, but not estrogen, stimulates vessel maturation in the mouse endometrium. *Endocrinology*. 2007 Nov;148(11):5433-41. Epub 2007 Aug 9.

**Caution: Product has not been fully validated for medical applications. For research use only.**

Tel: 609-228-6898

Fax: 609-228-5909

E-mail: tech@MedChemExpress.com

Address: 1 Deer Park Dr, Suite Q, Monmouth Junction, NJ 08852, USA