



# SZABO SCANDIC

Part of Europa Biosite

## Produktinformation



Forschungsprodukte & Biochemikalien



Zellkultur & Verbrauchsmaterial



Diagnostik & molekulare Diagnostik



Laborgeräte & Service

Weitere Information auf den folgenden Seiten!  
See the following pages for more information!



### Lieferung & Zahlungsart

siehe unsere [Liefer- und Versandbedingungen](#)

### Zuschläge

- Mindermengenzuschlag
- Trockeneiszuschlag
- Gefahrgutzuschlag
- Expressversand

### SZABO-SCANDIC HandelsgmbH

Quellenstraße 110, A-1100 Wien

T. +43(0)1 489 3961-0

F. +43(0)1 489 3961-7

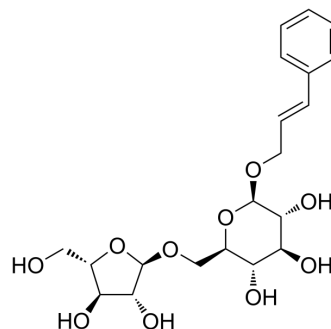
[mail@szabo-scandic.com](mailto:mail@szabo-scandic.com)

[www.szabo-scandic.com](http://www.szabo-scandic.com)

[linkedin.com/company/szaboscandic](https://www.linkedin.com/company/szaboscandic) 

## Rosarin

Cat. No.:	HY-N0506
CAS No.:	84954-93-8
Molecular Formula:	C <sub>20</sub> H <sub>28</sub> O <sub>10</sub>
Molecular Weight:	428.43
Target:	Interleukin Related
Pathway:	Immunology/Inflammation
Storage:	-20°C, protect from light * In solvent : -80°C, 6 months; -20°C, 1 month (protect from light)



### SOLVENT & SOLUBILITY

In Vitro	DMSO : 100 mg/mL (233.41 mM; Need ultrasonic)				
		Solvent Concentration	Mass		
	Preparing Stock Solutions		1 mg	5 mg	10 mg
		1 mM	2.3341 mL	11.6705 mL	23.3410 mL
		5 mM	0.4668 mL	2.3341 mL	4.6682 mL
	10 mM	0.2334 mL	1.1671 mL	2.3341 mL	
Please refer to the solubility information to select the appropriate solvent.					
In Vivo	1. Add each solvent one by one: 10% DMSO >> 40% PEG300 >> 5% Tween-80 >> 45% saline Solubility: ≥ 2.5 mg/mL (5.84 mM); Clear solution				
	2. Add each solvent one by one: 10% DMSO >> 90% (20% SBE-β-CD in saline) Solubility: ≥ 2.5 mg/mL (5.84 mM); Clear solution				
	3. Add each solvent one by one: 10% DMSO >> 90% corn oil Solubility: ≥ 2.5 mg/mL (5.84 mM); Clear solution				

### BIOLOGICAL ACTIVITY

Description	Rosarin is a cinnamyl alcohol glycoside isolated from <i>Rhodiola rosea</i> . Rosarin has anti-inflammatory and neuroprotective effects. Rosarin suppresses the expression of the proinflammatory factors iNOS, IL-1 β, and TNF- α in the kidney and prefrontal cortex of brain in mice [1].
IC <sub>50</sub> & Target	IL-1
In Vitro	Rosarin (0-50 μg/ml; 18 hours) pretreats 30 mins in LPS-induced BV-2 cells suppresses iNOS and cytokines expression in a concentration-dependent manner in the murine BV2 cells[1]. MCE has not independently confirmed the accuracy of these methods. They are for reference only.

---

## REFERENCES

[1]. Lee Y, et al. Anti-Inflammatory and Neuroprotective Effects of Constituents Isolated from *Rhodiola rosea*. *Evid Based Complement Alternat Med*. 2013;2013:514049.

---

**Caution: Product has not been fully validated for medical applications. For research use only.**

Tel: 609-228-6898

Fax: 609-228-5909

E-mail: [tech@MedChemExpress.com](mailto:tech@MedChemExpress.com)

Address: 1 Deer Park Dr, Suite Q, Monmouth Junction, NJ 08852, USA