



SZABO SCANDIC

Part of Europa Biosite

Produktinformation



Forschungsprodukte & Biochemikalien



Zellkultur & Verbrauchsmaterial



Diagnostik & molekulare Diagnostik



Laborgeräte & Service

Weitere Information auf den folgenden Seiten!
See the following pages for more information!



Lieferung & Zahlungsart

siehe unsere [Liefer- und Versandbedingungen](#)

Zuschläge

- Mindermengenzuschlag
- Trockeneiszuschlag
- Gefahrgutzuschlag
- Expressversand

SZABO-SCANDIC HandelsgmbH

Quellenstraße 110, A-1100 Wien

T. +43(0)1 489 3961-0

F. +43(0)1 489 3961-7

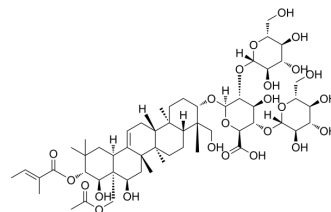
mail@szabo-scandic.com

www.szabo-scandic.com

[linkedin.com/company/szaboscandic](https://www.linkedin.com/company/szaboscandic) 

Isoescin IA

Cat. No.:	HY-N0556
CAS No.:	219944-39-5
Molecular Formula:	C ₅₅ H ₈₆ O ₂₄
Molecular Weight:	1131.26
Target:	HIV Protease
Pathway:	Anti-infection; Metabolic Enzyme/Protease
Storage:	4°C, protect from light * In solvent : -80°C, 6 months; -20°C, 1 month (protect from light)



SOLVENT & SOLUBILITY

In Vitro	DMSO : 100 mg/mL (88.40 mM; Need ultrasonic)						
	Preparing Stock Solutions	Solvent Concentration	Mass	1 mg	5 mg	10 mg	
				1 mM	0.8840 mL	4.4199 mL	8.8397 mL
				5 mM	0.1768 mL	0.8840 mL	1.7679 mL
				10 mM	0.0884 mL	0.4420 mL	0.8840 mL
Please refer to the solubility information to select the appropriate solvent.							
In Vivo	1. Add each solvent one by one: 10% DMSO >> 40% PEG300 >> 5% Tween-80 >> 45% saline Solubility: ≥ 2.5 mg/mL (2.21 mM); Clear solution						
	2. Add each solvent one by one: 10% DMSO >> 90% (20% SBE-β-CD in saline) Solubility: ≥ 2.5 mg/mL (2.21 mM); Clear solution						
	3. Add each solvent one by one: 10% DMSO >> 90% corn oil Solubility: ≥ 2.5 mg/mL (2.21 mM); Clear solution						

BIOLOGICAL ACTIVITY

Description	Isoescin IA is a triterpenoid saponin isolated from the seeds of <i>Aesculus chinensis</i> . Isoescin IA has anti-HIV-1 protease activity ^[1] .
-------------	--

REFERENCES

[1]. Yang XW, et al. Anti-HIV-1 protease triterpenoid saponins from the seeds of *Aesculus chinensis*. *J Nat Prod.* 1999 Nov;62(11):1510-3.

Caution: Product has not been fully validated for medical applications. For research use only.

Tel: 609-228-6898

Fax: 609-228-5909

E-mail: tech@MedChemExpress.com

Address: 1 Deer Park Dr, Suite Q, Monmouth Junction, NJ 08852, USA