



# SZABO SCANDIC

Part of Europa Biosite

## Produktinformation



Forschungsprodukte & Biochemikalien



Zellkultur & Verbrauchsmaterial



Diagnostik & molekulare Diagnostik



Laborgeräte & Service

Weitere Information auf den folgenden Seiten!  
See the following pages for more information!



### Lieferung & Zahlungsart

siehe unsere [Liefer- und Versandbedingungen](#)

### Zuschläge

- Mindermengenzuschlag
- Trockeneiszuschlag
- Gefahrgutzuschlag
- Expressversand

### SZABO-SCANDIC HandelsgmbH

Quellenstraße 110, A-1100 Wien

T. +43(0)1 489 3961-0

F. +43(0)1 489 3961-7

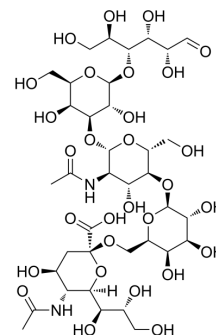
[mail@szabo-scandic.com](mailto:mail@szabo-scandic.com)

[www.szabo-scandic.com](http://www.szabo-scandic.com)

[linkedin.com/company/szaboscandic](https://www.linkedin.com/company/szaboscandic) 

## LSTc

<b>Cat. No.:</b>	HY-N10633		
<b>CAS No.:</b>	64003-55-0		
<b>Molecular Formula:</b>	C <sub>37</sub> H <sub>62</sub> N <sub>2</sub> O <sub>29</sub>		
<b>Molecular Weight:</b>	998.88		
<b>Target:</b>	Others		
<b>Pathway:</b>	Others		
<b>Storage:</b>	Powder	-20°C	3 years
	In solvent	-80°C	6 months
		-20°C	1 month



## SOLVENT & SOLUBILITY

### In Vitro

H<sub>2</sub>O : 125 mg/mL (125.14 mM; Need ultrasonic)

Concentration	Mass		
	1 mg	5 mg	10 mg
1 mM	1.0011 mL	5.0056 mL	10.0112 mL
5 mM	0.2002 mL	1.0011 mL	2.0022 mL
10 mM	0.1001 mL	0.5006 mL	1.0011 mL

Please refer to the solubility information to select the appropriate solvent.

## BIOLOGICAL ACTIVITY

### Description

LSTc (LS-tetrasaccharide c) is a human lactooligosaccharide presents on glycoproteins and glycolipids. LSTc is also a specific human JC polyomavirus (JCV) recognition motif. LSTc has good potential for the study of progressive multifocal leukoencephalopathy (PML)<sup>[1]</sup>.

### In Vitro

LSTc specifically engaged by JCV and inhibits JCV infection in SVG-A cells<sup>[1]</sup>.  
 MCE has not independently confirmed the accuracy of these methods. They are for reference only.  
 Cell Viability Assay<sup>[1]</sup>

Cell Line:	SVG-A cells
Concentration:	5 mM (pretreat LSTc with JCV, then JCV-LST complexes are added to cells)
Incubation Time:	1 h
Result:	Inhibited JCV infection.

---

## REFERENCES

---

[1]. Neu U, et al. Structure-function analysis of the human JC polyomavirus establishes the LSTc pentasaccharide as a functional receptor motif. Cell Host Microbe. 2010 Oct 21;8(4):309-19.

---

**Caution: Product has not been fully validated for medical applications. For research use only.**

Tel: 609-228-6898

Fax: 609-228-5909

E-mail: [tech@MedChemExpress.com](mailto:tech@MedChemExpress.com)

Address: 1 Deer Park Dr, Suite Q, Monmouth Junction, NJ 08852, USA