



# SZABO SCANDIC

Part of Europa Biosite

## Produktinformation



Forschungsprodukte & Biochemikalien



Zellkultur & Verbrauchsmaterial



Diagnostik & molekulare Diagnostik



Laborgeräte & Service

Weitere Information auf den folgenden Seiten!  
See the following pages for more information!



### Lieferung & Zahlungsart

siehe unsere [Liefer- und Versandbedingungen](#)

### Zuschläge

- Mindermengenzuschlag
- Trockeneiszuschlag
- Gefahrgutzuschlag
- Expressversand

### SZABO-SCANDIC HandelsgmbH

Quellenstraße 110, A-1100 Wien

T. +43(0)1 489 3961-0

F. +43(0)1 489 3961-7

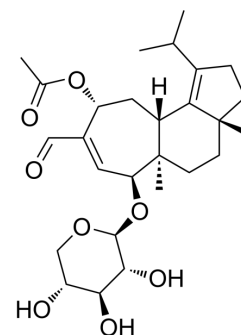
[mail@szabo-scandic.com](mailto:mail@szabo-scandic.com)

[www.szabo-scandic.com](http://www.szabo-scandic.com)

[linkedin.com/company/szaboscandic](https://www.linkedin.com/company/szaboscandic) 

## Erinacine P

Cat. No.:	HY-N11019
CAS No.:	291532-17-7
Molecular Formula:	C <sub>27</sub> H <sub>40</sub> O <sub>8</sub>
Molecular Weight:	492.6
Target:	Others
Pathway:	Others
Storage:	-20°C, protect from light * In solvent : -80°C, 6 months; -20°C, 1 month (protect from light)



### BIOLOGICAL ACTIVITY

#### Description

Erinacine P (compound 1) is a parental metabolite of luteolin. Erinacine P can be isolated from the mycelia of basidiomycetous *Herichium erinaceum* YB4-6237. Under mild conditions, Erinacine P is able to be chemically converted to Erinacine B and then to Erinacine A<sup>[1]</sup>.

### REFERENCES

[1]. Kenmoku H, et al. Isolation of erinacine P, a new parental metabolite of cyathane-xylósides, from *Herichium erinaceum* and its biomimetic conversion into erinacines A and B[J]. *Tetrahedron Letters*, 2000, 41(22): 4389-4393.

**Caution: Product has not been fully validated for medical applications. For research use only.**

Tel: 609-228-6898

Fax: 609-228-5909

E-mail: tech@MedChemExpress.com

Address: 1 Deer Park Dr, Suite Q, Monmouth Junction, NJ 08852, USA