



# SZABO SCANDIC

Part of Europa Biosite

## Produktinformation



Forschungsprodukte & Biochemikalien



Zellkultur & Verbrauchsmaterial



Diagnostik & molekulare Diagnostik



Laborgeräte & Service

Weitere Information auf den folgenden Seiten!  
See the following pages for more information!



### Lieferung & Zahlungsart

siehe unsere [Liefer- und Versandbedingungen](#)

### Zuschläge

- Mindermengenzuschlag
- Trockeneiszuschlag
- Gefahrgutzuschlag
- Expressversand

### SZABO-SCANDIC HandelsgmbH

Quellenstraße 110, A-1100 Wien

T. +43(0)1 489 3961-0

F. +43(0)1 489 3961-7

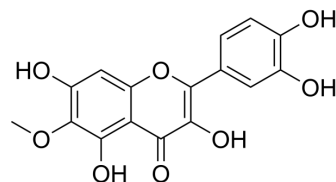
[mail@szabo-scandic.com](mailto:mail@szabo-scandic.com)

[www.szabo-scandic.com](http://www.szabo-scandic.com)

[linkedin.com/company/szaboscandic](https://www.linkedin.com/company/szaboscandic) 

## Patuletin

<b>Cat. No.:</b>	HY-N12503
<b>CAS No.:</b>	519-96-0
<b>Molecular Formula:</b>	C <sub>16</sub> H <sub>12</sub> O <sub>8</sub>
<b>Molecular Weight:</b>	332.26
<b>Target:</b>	Apoptosis; Caspase
<b>Pathway:</b>	Apoptosis
<b>Storage:</b>	Please store the product under the recommended conditions in the Certificate of Analysis.



### BIOLOGICAL ACTIVITY

<b>Description</b>	Patuletin is a flavonol, that can be isolated from the flowers of <i>Tagetes patula</i> . Patuletin shows anti-proliferative activity against cancer cells. Patuletin causes significant nuclear fragmentation and has a great capacity to induce caspase-3 activation <sup>[1][2]</sup> .									
<b>IC<sub>50</sub> &amp; Target</b>	Caspase 3									
<b>In Vitro</b>	<p>Patuletin (0-100 µg/mL, 24 h) shows anti-proliferative activity against cancer cells<sup>[2]</sup>. Patuletin induces apoptosis in the CaSki, MDA-MB-231, and SK-Lu-1 cells<sup>[2]</sup>. MCE has not independently confirmed the accuracy of these methods. They are for reference only.</p> <p>Cell Proliferation Assay<sup>[2]</sup></p> <table border="1"> <tr> <td>Cell Line:</td> <td>CaSki, MDA-MB-231 and SK-Lu-1</td> </tr> <tr> <td>Concentration:</td> <td>6, 12, 25, 50 and 100 µg/mL</td> </tr> <tr> <td>Incubation Time:</td> <td>24 h</td> </tr> <tr> <td>Result:</td> <td>Showed a dose-dependent proliferation inhibition, with IC<sub>50</sub> values of 37, 86, and 18 µg/mL for CaSki, MDA-MB-231 and SK-Lu-1 cells, respectively.</td> </tr> </table>		Cell Line:	CaSki, MDA-MB-231 and SK-Lu-1	Concentration:	6, 12, 25, 50 and 100 µg/mL	Incubation Time:	24 h	Result:	Showed a dose-dependent proliferation inhibition, with IC <sub>50</sub> values of 37, 86, and 18 µg/mL for CaSki, MDA-MB-231 and SK-Lu-1 cells, respectively.
Cell Line:	CaSki, MDA-MB-231 and SK-Lu-1									
Concentration:	6, 12, 25, 50 and 100 µg/mL									
Incubation Time:	24 h									
Result:	Showed a dose-dependent proliferation inhibition, with IC <sub>50</sub> values of 37, 86, and 18 µg/mL for CaSki, MDA-MB-231 and SK-Lu-1 cells, respectively.									

### REFERENCES

[1]. Zane A, et al. Flavonols in Spinach Leaves[J]. Journal of Organic Chemistry, 1961, 26(11).

[2]. Alvarado-Sansininea JJ, et al. Quercetagenin and Patuletin: Antiproliferative, Necrotic and Apoptotic Activity in Tumor Cell Lines. Molecules. 2018 Oct 9;23(10):2579.

---

**Caution: Product has not been fully validated for medical applications. For research use only.**

Tel: 609-228-6898

Fax: 609-228-5909

E-mail: [tech@MedChemExpress.com](mailto:tech@MedChemExpress.com)

Address: 1 Deer Park Dr, Suite Q, Monmouth Junction, NJ 08852, USA