



SZABO SCANDIC

Part of Europa Biosite

Produktinformation



Forschungsprodukte & Biochemikalien



Zellkultur & Verbrauchsmaterial



Diagnostik & molekulare Diagnostik



Laborgeräte & Service

Weitere Information auf den folgenden Seiten!
See the following pages for more information!



Lieferung & Zahlungsart

siehe unsere [Liefer- und Versandbedingungen](#)

Zuschläge

- Mindermengenzuschlag
- Trockeneiszuschlag
- Gefahrgutzuschlag
- Expressversand

SZABO-SCANDIC HandelsgmbH

Quellenstraße 110, A-1100 Wien

T. +43(0)1 489 3961-0

F. +43(0)1 489 3961-7

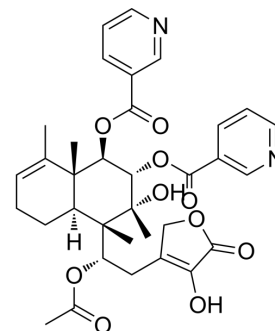
mail@szabo-scandic.com

www.szabo-scandic.com

[linkedin.com/company/szaboscandic](https://www.linkedin.com/company/szaboscandic) 

Scutebarbatine X

Cat. No.:	HY-N1263
CAS No.:	1312716-26-9
Molecular Formula:	C ₃₄ H ₃₈ N ₂ O ₁₀
Molecular Weight:	634.67
Target:	Others
Pathway:	Others
Storage:	Please store the product under the recommended conditions in the Certificate of Analysis.



BIOLOGICAL ACTIVITY

Description	Scutebarbatine X (Compound 2) is a neo-clerodane diterpenoids isolated from <i>Scutellaria barbatae</i> (Labiatae) and has anti-inflammatory properties ^[1] .
In Vitro	<p>Scutebarbatine X significantly reduces the production of NO by LPS-stimulated BV2 cells in a dose-dependent manner, with an IC₅₀ value of 27.4 μM^[1].</p> <p>Scutebarbatine X (15, 30 μM; 1 h) dose-dependently reduces the expression of iNOS in BV2 cells^[1].</p> <p>Scutebarbatine X (7.5, 15, 30 μM; 24 h) does not reduce the viability of BV2 cells^[1].</p> <p>MCE has not independently confirmed the accuracy of these methods. They are for reference only.</p>

REFERENCES

[1]. Lee SR, et al. Constituents from *Scutellaria barbata* Inhibiting Nitric Oxide Production in LPS-Stimulated Microglial Cells. *Chem Biodivers*. 2017 Nov;14(11).

Caution: Product has not been fully validated for medical applications. For research use only.

Tel: 609-228-6898

Fax: 609-228-5909

E-mail: tech@MedChemExpress.com

Address: 1 Deer Park Dr, Suite Q, Monmouth Junction, NJ 08852, USA