



# SZABO SCANDIC

Part of Europa Biosite

## Produktinformation



Forschungsprodukte & Biochemikalien



Zellkultur & Verbrauchsmaterial



Diagnostik & molekulare Diagnostik



Laborgeräte & Service

Weitere Information auf den folgenden Seiten!  
See the following pages for more information!



### Lieferung & Zahlungsart

siehe unsere [Liefer- und Versandbedingungen](#)

### Zuschläge

- Mindermengenzuschlag
- Trockeneiszuschlag
- Gefahrgutzuschlag
- Expressversand

### SZABO-SCANDIC HandelsgmbH

Quellenstraße 110, A-1100 Wien

T. +43(0)1 489 3961-0

F. +43(0)1 489 3961-7

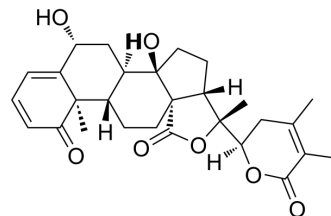
[mail@szabo-scandic.com](mailto:mail@szabo-scandic.com)

[www.szabo-scandic.com](http://www.szabo-scandic.com)

[linkedin.com/company/szaboscandic](https://www.linkedin.com/company/szaboscandic) 

## Withaphysalin E

<b>Cat. No.:</b>	HY-N12690		
<b>CAS No.:</b>	118985-24-3		
<b>Molecular Formula:</b>	C <sub>28</sub> H <sub>34</sub> O <sub>7</sub>		
<b>Molecular Weight:</b>	482.57		
<b>Target:</b>	Others		
<b>Pathway:</b>	Others		
<b>Storage:</b>	Powder	-20°C	3 years
	In solvent	-80°C	6 months
		-20°C	1 month



### SOLVENT & SOLUBILITY

#### In Vitro

DMSO : 15 mg/mL (31.08 mM; Need ultrasonic and warming)

Concentration	Mass		
	1 mg	5 mg	10 mg
1 mM	2.0722 mL	10.3612 mL	20.7224 mL
5 mM	0.4144 mL	2.0722 mL	4.1445 mL
10 mM	0.2072 mL	1.0361 mL	2.0722 mL

Please refer to the solubility information to select the appropriate solvent.

### BIOLOGICAL ACTIVITY

#### Description

Withaphysalin E is a natural product that can be isolated from *Physalis divericata*. Withaphysalin E can be used in the study of non-small cell lung cancer<sup>[1][2]</sup>.

### REFERENCES

[1]. Rao PC, et al. Cytotoxicity of withasteroids: withametelin induces cell cycle arrest at G2/M phase and mitochondria-mediated apoptosis in non-small cell lung cancer A549 cells. *Tumour Biol.* 2016 Sep;37(9):12579-12587.

[2]. Ma L, et al. Withaphysanolid A, a novel C-27 norwithanolide skeleton, and other cytotoxic compounds from *Physalis divericata*. *Tetrahedron letters*, 2007, 48(3): 449-452

---

**Caution: Product has not been fully validated for medical applications. For research use only.**

Tel: 609-228-6898

Fax: 609-228-5909

E-mail: [tech@MedChemExpress.com](mailto:tech@MedChemExpress.com)

Address: 1 Deer Park Dr, Suite Q, Monmouth Junction, NJ 08852, USA