



# SZABO SCANDIC

Part of Europa Biosite

## Produktinformation



Forschungsprodukte & Biochemikalien



Zellkultur & Verbrauchsmaterial



Diagnostik & molekulare Diagnostik



Laborgeräte & Service

Weitere Information auf den folgenden Seiten!  
See the following pages for more information!



### Lieferung & Zahlungsart

siehe unsere [Liefer- und Versandbedingungen](#)

### Zuschläge

- Mindermengenzuschlag
- Trockeneiszuschlag
- Gefahrgutzuschlag
- Expressversand

### SZABO-SCANDIC HandelsgmbH

Quellenstraße 110, A-1100 Wien

T. +43(0)1 489 3961-0

F. +43(0)1 489 3961-7

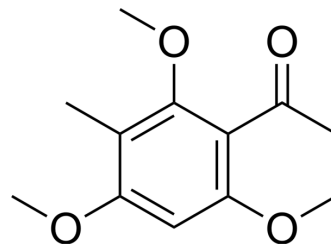
[mail@szabo-scandic.com](mailto:mail@szabo-scandic.com)

[www.szabo-scandic.com](http://www.szabo-scandic.com)

[linkedin.com/company/szaboscandic](https://www.linkedin.com/company/szaboscandic) 

## 2',4',6'-Trimethoxy-3'-methylacetophenone

Cat. No.:	HY-N12738
CAS No.:	39701-13-8
Molecular Formula:	C <sub>12</sub> H <sub>16</sub> O <sub>4</sub>
Molecular Weight:	224.25
Target:	Others
Pathway:	Others
Storage:	Please store the product under the recommended conditions in the Certificate of Analysis.



### BIOLOGICAL ACTIVITY

#### Description

2',4',6'-Trimethoxy-3'-methylacetophenone (compound 15) is a rosin lactone that can be isolated from *E. portulacoides*<sup>[1]</sup>.

### REFERENCES

[1]. Morgenstern T, Bittner M, Silva M, et al. Diterpenes and phloracetophenones from *Euphorbia portulacoides*[J]. *Phytochemistry*, 1996, 41(4): 1149-1153.

**Caution: Product has not been fully validated for medical applications. For research use only.**

Tel: 609-228-6898

Fax: 609-228-5909

E-mail: tech@MedChemExpress.com

Address: 1 Deer Park Dr, Suite Q, Monmouth Junction, NJ 08852, USA