



# SZABO SCANDIC

Part of Europa Biosite

## Produktinformation



Forschungsprodukte & Biochemikalien



Zellkultur & Verbrauchsmaterial



Diagnostik & molekulare Diagnostik



Laborgeräte & Service

Weitere Information auf den folgenden Seiten!  
See the following pages for more information!



### Lieferung & Zahlungsart

siehe unsere [Liefer- und Versandbedingungen](#)

### Zuschläge

- Mindermengenzuschlag
- Trockeneiszuschlag
- Gefahrgutzuschlag
- Expressversand

### SZABO-SCANDIC HandelsgmbH

Quellenstraße 110, A-1100 Wien

T. +43(0)1 489 3961-0

F. +43(0)1 489 3961-7

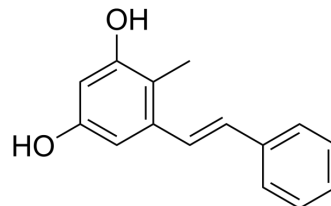
[mail@szabo-scandic.com](mailto:mail@szabo-scandic.com)

[www.szabo-scandic.com](http://www.szabo-scandic.com)

[linkedin.com/company/szaboscandic](https://www.linkedin.com/company/szaboscandic) 

## (E)-4-Methyl-5-styrylbenzene-1,3-diol

Cat. No.:	HY-N12808
CAS No.:	2407559-34-4
Molecular Formula:	C <sub>15</sub> H <sub>14</sub> O <sub>2</sub>
Molecular Weight:	226.27
Target:	Fungal
Pathway:	Anti-infection
Storage:	Please store the product under the recommended conditions in the Certificate of Analysis.



### BIOLOGICAL ACTIVITY

Description	(E)-4-Methyl-5-styrylbenzene-1,3-diol (Compound III) is an antifungal agent and can be extracted from <i>Dracaena cochinchinensis</i> (Lour.) S. C. Chen <sup>[1]</sup> .
In Vitro	(E)-4-Methyl-5-styrylbenzene-1,3-diol has antibacterial activity against <i>Helminthosporium turcicum</i> , <i>Curvularia lunata</i> , <i>Gibberella Zeae</i> , <i>Ustilago</i> , and <i>Helminthosporium maydis</i> , with IC <sub>50</sub> values of 10.05, 18.52, 6.12, 8.09, 8.25 µg/mL. MCE has not independently confirmed the accuracy of these methods. They are for reference only.

### REFERENCES

[1]. Luo Shihong, et al. A kind of *Dracaena cochinchinensis* extract and its preparation and application with bacteria resistance function. CN110041166A

**Caution: Product has not been fully validated for medical applications. For research use only.**

Tel: 609-228-6898

Fax: 609-228-5909

E-mail: tech@MedChemExpress.com

Address: 1 Deer Park Dr, Suite Q, Monmouth Junction, NJ 08852, USA