



# SZABO SCANDIC

Part of Europa Biosite

## Produktinformation



Forschungsprodukte & Biochemikalien



Zellkultur & Verbrauchsmaterial



Diagnostik & molekulare Diagnostik



Laborgeräte & Service

Weitere Information auf den folgenden Seiten!  
See the following pages for more information!



### Lieferung & Zahlungsart

siehe unsere [Liefer- und Versandbedingungen](#)

### Zuschläge

- Mindermengenzuschlag
- Trockeneiszuschlag
- Gefahrgutzuschlag
- Expressversand

### SZABO-SCANDIC HandelsgmbH

Quellenstraße 110, A-1100 Wien

T. +43(0)1 489 3961-0

F. +43(0)1 489 3961-7

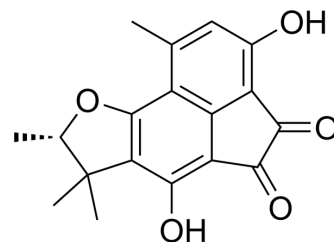
[mail@szabo-scandic.com](mailto:mail@szabo-scandic.com)

[www.szabo-scandic.com](http://www.szabo-scandic.com)

[linkedin.com/company/szaboscandic](https://www.linkedin.com/company/szaboscandic) 

## Sclerodione

Cat. No.:	HY-N12893
CAS No.:	104855-19-8
Molecular Formula:	C <sub>18</sub> H <sub>16</sub> O <sub>5</sub>
Molecular Weight:	312.32
Target:	Fungal; Lipase
Pathway:	Anti-infection
Storage:	Please store the product under the recommended conditions in the Certificate of Analysis.



### BIOLOGICAL ACTIVITY

#### Description

Sclerodione is a metabolite that can be produced by the Scleroderris canker fungus, *Gremmeniella abietina*. Sclerodione has antifungal activity. Sclerodione is a lipase inhibitor (IC<sub>50</sub>: 1 μM)<sup>[1][2][3]</sup>.

### REFERENCES

- [1]. William A. et al. Metabolites produced by the Scleroderris canker fungus, *Gremmeniella abietina*. Part 1. *Canadian Journal of Chemistry*. 1986. 64(8): 1585-1589.
- [2]. Hidayat Hussain, et al. Phytochemical investigation and antimicrobial activity of an endophytic fungus *Phoma* sp. *Journal of King Saud University - Science*. Volume 27, Issue 1, January 2015, Pages 92-95.
- [3]. Macabeo APG, et al. Alpha-Glucosidase- and Lipase-Inhibitory Phenalenones from a New Species of *Pseudolophiostoma* Originating from Thailand. *Molecules*. 2020 Feb 20;25(4):965.

**Caution: Product has not been fully validated for medical applications. For research use only.**

Tel: 609-228-6898

Fax: 609-228-5909

E-mail: tech@MedChemExpress.com

Address: 1 Deer Park Dr, Suite Q, Monmouth Junction, NJ 08852, USA