



# SZABO SCANDIC

Part of Europa Biosite

## Produktinformation



Forschungsprodukte & Biochemikalien



Zellkultur & Verbrauchsmaterial



Diagnostik & molekulare Diagnostik



Laborgeräte & Service

Weitere Information auf den folgenden Seiten!  
See the following pages for more information!



### Lieferung & Zahlungsart

siehe unsere [Liefer- und Versandbedingungen](#)

### Zuschläge

- Mindermengenzuschlag
- Trockeneiszuschlag
- Gefahrgutzuschlag
- Expressversand

### SZABO-SCANDIC HandelsgmbH

Quellenstraße 110, A-1100 Wien

T. +43(0)1 489 3961-0

F. +43(0)1 489 3961-7

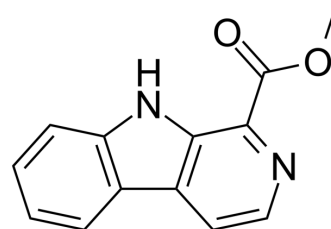
[mail@szabo-scandic.com](mailto:mail@szabo-scandic.com)

[www.szabo-scandic.com](http://www.szabo-scandic.com)

[linkedin.com/company/szaboscandic](https://www.linkedin.com/company/szaboscandic) 

## 1-Methoxycarbonyl- $\beta$ -carboline

Cat. No.:	HY-N1633
CAS No.:	3464-66-2
Molecular Formula:	C <sub>13</sub> H <sub>10</sub> N <sub>2</sub> O <sub>2</sub>
Molecular Weight:	226.23
Target:	Others
Pathway:	Others
Storage:	4°C, protect from light * In solvent : -80°C, 6 months; -20°C, 1 month (protect from light)



### SOLVENT & SOLUBILITY

In Vitro	DMSO : 100 mg/mL (442.03 mM; Need ultrasonic)						
	Preparing Stock Solutions	Solvent Concentration	Mass	1 mg	5 mg	10 mg	
				1 mM	4.4203 mL	22.1014 mL	44.2028 mL
				5 mM	0.8841 mL	4.4203 mL	8.8406 mL
				10 mM	0.4420 mL	2.2101 mL	4.4203 mL
Please refer to the solubility information to select the appropriate solvent.							
In Vivo	1. Add each solvent one by one: 10% DMSO >> 40% PEG300 >> 5% Tween-80 >> 45% saline Solubility: $\geq$ 2.5 mg/mL (11.05 mM); Clear solution						
	2. Add each solvent one by one: 10% DMSO >> 90% (20% SBE- $\beta$ -CD in saline) Solubility: $\geq$ 2.5 mg/mL (11.05 mM); Clear solution						
	3. Add each solvent one by one: 10% DMSO >> 90% corn oil Solubility: $\geq$ 2.5 mg/mL (11.05 mM); Clear solution						

### BIOLOGICAL ACTIVITY

Description	1-Methoxycarbonyl- $\beta$ -carboline is a natural alkaloid <sup>[1]</sup> .
-------------	--

### REFERENCES

[1]. C Souleles, et al. A New beta-Carboline Alkaloid from *Ailanthus altissima*. *Planta Med.* 1989 Jun;55(3):286-7.

---

**Caution: Product has not been fully validated for medical applications. For research use only.**

Tel: 609-228-6898

Fax: 609-228-5909

E-mail: [tech@MedChemExpress.com](mailto:tech@MedChemExpress.com)

Address: 1 Deer Park Dr, Suite Q, Monmouth Junction, NJ 08852, USA