



SZABO SCANDIC

Part of Europa Biosite

Produktinformation



Forschungsprodukte & Biochemikalien



Zellkultur & Verbrauchsmaterial



Diagnostik & molekulare Diagnostik



Laborgeräte & Service

Weitere Information auf den folgenden Seiten!
See the following pages for more information!



Lieferung & Zahlungsart

siehe unsere [Liefer- und Versandbedingungen](#)

Zuschläge

- Mindermengenzuschlag
- Trockeneiszuschlag
- Gefahrgutzuschlag
- Expressversand

SZABO-SCANDIC HandelsgmbH

Quellenstraße 110, A-1100 Wien

T. +43(0)1 489 3961-0

F. +43(0)1 489 3961-7

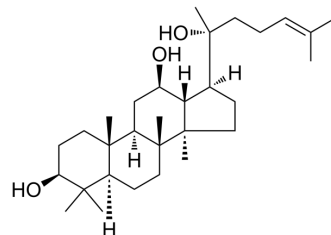
mail@szabo-scandic.com

www.szabo-scandic.com

[linkedin.com/company/szaboscandic](https://www.linkedin.com/company/szaboscandic) 

(20R)-Protopanaxadiol

Cat. No.:	HY-N2040
CAS No.:	7755-01-3
Molecular Formula:	C ₃₀ H ₅₂ O ₃
Molecular Weight:	460.73
Target:	Bacterial
Pathway:	Anti-infection
Storage:	4°C, protect from light * In solvent : -80°C, 6 months; -20°C, 1 month (protect from light)



SOLVENT & SOLUBILITY

In Vitro	DMSO : 20 mg/mL (43.41 mM; Need ultrasonic)						
	Preparing Stock Solutions	Solvent Concentration	Mass	1 mg	5 mg	10 mg	
				1 mM	2.1705 mL	10.8523 mL	21.7047 mL
				5 mM	0.4341 mL	2.1705 mL	4.3409 mL
				10 mM	0.2170 mL	1.0852 mL	2.1705 mL
Please refer to the solubility information to select the appropriate solvent.							
In Vivo	1. Add each solvent one by one: 10% DMSO >> 40% PEG300 >> 5% Tween-80 >> 45% saline Solubility: 2 mg/mL (4.34 mM); Suspended solution; Need ultrasonic						
	2. Add each solvent one by one: 10% DMSO >> 90% (20% SBE-β-CD in saline) Solubility: 2 mg/mL (4.34 mM); Suspended solution; Need ultrasonic						
	3. Add each solvent one by one: 10% DMSO >> 90% corn oil Solubility: ≥ 2 mg/mL (4.34 mM); Clear solution						

BIOLOGICAL ACTIVITY

Description	(20R)-Protopanaxadiol is a triterpenoid saponin metabolite of 20(R)-ginsenoside Rg3 in black ginseng. (20R)-Protopanaxadiol exhibits anti-tumor activity and cytotoxicity, and potently inhibits the growth of <i>Helicobacter pylori</i> ^{[1][2][3]} .
-------------	--

REFERENCES

- [1]. Liu L, et al. Enzymatic preparation of 20(S, R)-protopanaxadiol by transformation of 20(S, R)-Rg3 from black ginseng. *Phytochemistry*. 2010 Sep;71(13):1514-20.
- [2]. Bae EA, et al. Metabolism of 20(S)- and 20(R)-ginsenoside Rg3 by human intestinal bacteria and its relation to in vitro biological activities. *Biol Pharm Bull*. 2002

Jan;25(1):58-63.

[3]. Hasegawa H, et al. Inhibitory effect of some triterpenoid saponins on glucose transport in tumor cells and its application to in vitro cytotoxic and antiviral activities. *Planta Med.* 1994 Jun;60(3):240-3.

Caution: Product has not been fully validated for medical applications. For research use only.

Tel: 609-228-6898

Fax: 609-228-5909

E-mail: tech@MedChemExpress.com

Address: 1 Deer Park Dr, Suite Q, Monmouth Junction, NJ 08852, USA