



SZABO SCANDIC

Part of Europa Biosite

Produktinformation



Forschungsprodukte & Biochemikalien



Zellkultur & Verbrauchsmaterial



Diagnostik & molekulare Diagnostik



Laborgeräte & Service

Weitere Information auf den folgenden Seiten!
See the following pages for more information!



Lieferung & Zahlungsart

siehe unsere [Liefer- und Versandbedingungen](#)

Zuschläge

- Mindermengenzuschlag
- Trockeneiszuschlag
- Gefahrgutzuschlag
- Expressversand

SZABO-SCANDIC HandelsgmbH

Quellenstraße 110, A-1100 Wien

T. +43(0)1 489 3961-0

F. +43(0)1 489 3961-7

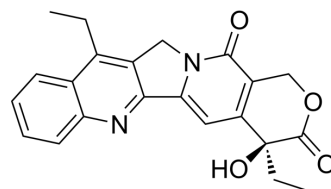
mail@szabo-scandic.com

www.szabo-scandic.com

[linkedin.com/company/szaboscandic](https://www.linkedin.com/company/szaboscandic) 

7-Ethylcamptothecin

Cat. No.:	HY-N2108		
CAS No.:	78287-27-1		
Molecular Formula:	C ₂₂ H ₂₀ N ₂ O ₄		
Molecular Weight:	376.41		
Target:	ADC Cytotoxin		
Pathway:	Antibody-drug Conjugate/ADC Related		
Storage:	Powder	-20°C	3 years
		4°C	2 years
	In solvent	-80°C	6 months
		-20°C	1 month



SOLVENT & SOLUBILITY

In Vitro

DMSO : 5 mg/mL (13.28 mM; ultrasonic and warming and heat to 60°C)

Concentration	Mass			
	1 mg	5 mg	10 mg	
1 mM	2.6567 mL	13.2834 mL	26.5668 mL	
5 mM	0.5313 mL	2.6567 mL	5.3134 mL	
10 mM	0.2657 mL	1.3283 mL	2.6567 mL	

Please refer to the solubility information to select the appropriate solvent.

BIOLOGICAL ACTIVITY

Description

7-Ethylcamptothecin is one of camptothecin analogues. camptothecin (CPT), a cytotoxic alkaloid isolated from *Camptotheca acuminata*, is shown to have strong antitumor activity against L1210 leukemia and Walker 256 carcinosarcoma models^[1].

REFERENCES

[1]. Wang, X., et al. New Route for Conversion of Camptothecin to 7-Ethylcamptothecin and 7-Propylcamptothecin. *Synthetic Communications*, 2007,37(3), 519–523.

Caution: Product has not been fully validated for medical applications. For research use only.

Tel: 609-228-6898

Fax: 609-228-5909

E-mail: tech@MedChemExpress.com

Address: 1 Deer Park Dr, Suite Q, Monmouth Junction, NJ 08852, USA