



# SZABO SCANDIC

Part of Europa Biosite

## Produktinformation



Forschungsprodukte & Biochemikalien



Zellkultur & Verbrauchsmaterial



Diagnostik & molekulare Diagnostik



Laborgeräte & Service

Weitere Information auf den folgenden Seiten!  
See the following pages for more information!



### Lieferung & Zahlungsart

siehe unsere [Liefer- und Versandbedingungen](#)

### Zuschläge

- Mindermengenzuschlag
- Trockeneiszuschlag
- Gefahrgutzuschlag
- Expressversand

### SZABO-SCANDIC HandelsgmbH

Quellenstraße 110, A-1100 Wien

T. +43(0)1 489 3961-0

F. +43(0)1 489 3961-7

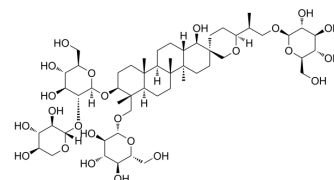
[mail@szabo-scandic.com](mailto:mail@szabo-scandic.com)

[www.szabo-scandic.com](http://www.szabo-scandic.com)

[linkedin.com/company/szaboscandic](https://www.linkedin.com/company/szaboscandic) 

## Hosenkoside M

Cat. No.:	HY-N2244		
CAS No.:	161016-51-9		
Molecular Formula:	C <sub>53</sub> H <sub>90</sub> O <sub>24</sub>		
Molecular Weight:	1111.27		
Target:	Others		
Pathway:	Others		
Storage:	Powder	-20°C	3 years
		4°C	2 years
	In solvent	-80°C	6 months
		-20°C	1 month



### SOLVENT & SOLUBILITY

In Vitro	DMSO : 100 mg/mL (89.99 mM; Need ultrasonic)			
		Solvent Concentration	Mass	
			1 mg	5 mg
	Preparing Stock Solutions	1 mM	0.8999 mL	4.4994 mL
		5 mM	0.1800 mL	0.8999 mL
		10 mM	0.0900 mL	0.4499 mL
Please refer to the solubility information to select the appropriate solvent.				
In Vivo	1. Add each solvent one by one: 10% DMSO >> 40% PEG300 >> 5% Tween-80 >> 45% saline Solubility: ≥ 2.5 mg/mL (2.25 mM); Clear solution			
	2. Add each solvent one by one: 10% DMSO >> 90% (20% SBE-β-CD in saline) Solubility: ≥ 2.5 mg/mL (2.25 mM); Clear solution			
	3. Add each solvent one by one: 10% DMSO >> 90% corn oil Solubility: ≥ 2.5 mg/mL (2.25 mM); Clear solution			

### BIOLOGICAL ACTIVITY

Description	Hosenkoside M is a baccharane glycoside isolated from the seeds of <i>impatiens balsamina</i> .
-------------	---

### REFERENCES

[1]. Yu X, et al. An LC-MS/MS method for simultaneous determination of hosenkoside A and hosenkoside K from Semen *Impatiens* in rat plasma and its application to a

**Caution: Product has not been fully validated for medical applications. For research use only.**

Tel: 609-228-6898

Fax: 609-228-5909

E-mail: [tech@MedChemExpress.com](mailto:tech@MedChemExpress.com)

Address: 1 Deer Park Dr, Suite Q, Monmouth Junction, NJ 08852, USA