



SZABO SCANDIC

Part of Europa Biosite

Produktinformation



Forschungsprodukte & Biochemikalien



Zellkultur & Verbrauchsmaterial



Diagnostik & molekulare Diagnostik



Laborgeräte & Service

Weitere Information auf den folgenden Seiten!
See the following pages for more information!



Lieferung & Zahlungsart

siehe unsere [Liefer- und Versandbedingungen](#)

Zuschläge

- Mindermengenzuschlag
- Trockeneiszuschlag
- Gefahrgutzuschlag
- Expressversand

SZABO-SCANDIC HandelsgmbH

Quellenstraße 110, A-1100 Wien

T. +43(0)1 489 3961-0

F. +43(0)1 489 3961-7

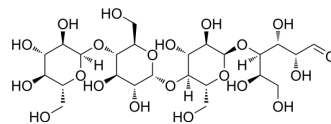
mail@szabo-scandic.com

www.szabo-scandic.com

[linkedin.com/company/szaboscandic](https://www.linkedin.com/company/szaboscandic) 

Maltotetraose

Cat. No.:	HY-N2464
CAS No.:	34612-38-9
Molecular Formula:	C ₂₄ H ₄₂ O ₂₁
Molecular Weight:	666.58
Target:	Endogenous Metabolite; Bacterial; TNF Receptor
Pathway:	Metabolic Enzyme/Protease; Anti-infection; Apoptosis
Storage:	-20°C, protect from light * In solvent : -80°C, 6 months; -20°C, 1 month (protect from light)



SOLVENT & SOLUBILITY

In Vitro	H ₂ O : 125 mg/mL (187.52 mM); Need ultrasonic					
	Preparing Stock Solutions	Solvent	Mass	1 mg	5 mg	10 mg
		Concentration				
		1 mM		1.5002 mL	7.5010 mL	15.0019 mL
		5 mM		0.3000 mL	1.5002 mL	3.0004 mL
10 mM		0.1500 mL	0.7501 mL	1.5002 mL		
Please refer to the solubility information to select the appropriate solvent.						
In Vivo	1. Add each solvent one by one: PBS Solubility: 100 mg/mL (150.02 mM); Clear solution; Need ultrasonic					

BIOLOGICAL ACTIVITY

Description	Maltotetraose can be used as a substrate for the enzyme-coupled determination of amylase activity in biological fluids.
IC₅₀ & Target	Human Endogenous Metabolite

REFERENCES

[1]. Whitlow KJ, et al. Maltotetraose as a substrate for enzyme-coupled assay of amylase activity in serum and urine. Clin Chem. 1979 Mar;25(3):481-3.

Caution: Product has not been fully validated for medical applications. For research use only.

Tel: 609-228-6898

Fax: 609-228-5909

E-mail: tech@MedChemExpress.com

Address: 1 Deer Park Dr, Suite Q, Monmouth Junction, NJ 08852, USA