



SZABO SCANDIC

Part of Europa Biosite

Produktinformation



Forschungsprodukte & Biochemikalien



Zellkultur & Verbrauchsmaterial



Diagnostik & molekulare Diagnostik



Laborgeräte & Service

Weitere Information auf den folgenden Seiten!
See the following pages for more information!



Lieferung & Zahlungsart

siehe unsere [Liefer- und Versandbedingungen](#)

Zuschläge

- Mindermengenzuschlag
- Trockeneiszuschlag
- Gefahrgutzuschlag
- Expressversand

SZABO-SCANDIC HandelsgmbH

Quellenstraße 110, A-1100 Wien

T. +43(0)1 489 3961-0

F. +43(0)1 489 3961-7

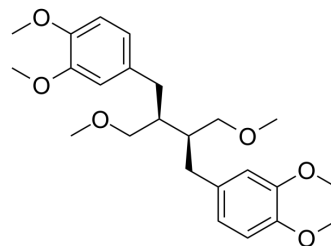
mail@szabo-scandic.com

www.szabo-scandic.com

[linkedin.com/company/szaboscandic](https://www.linkedin.com/company/szaboscandic) 

Phyllanthin

Cat. No.:	HY-N4107
CAS No.:	10351-88-9
Molecular Formula:	C ₂₄ H ₃₄ O ₆
Molecular Weight:	418.52
Target:	Others
Pathway:	Others
Storage:	4°C, protect from light * In solvent : -80°C, 6 months; -20°C, 1 month (protect from light)



SOLVENT & SOLUBILITY

In Vitro	DMSO : 62.5 mg/mL (149.34 mM; ultrasonic and warming and heat to 60°C)						
	Preparing Stock Solutions	Solvent Concentration	Mass	1 mg	5 mg	10 mg	
				1 mM	2.3894 mL	11.9469 mL	23.8937 mL
				5 mM	0.4779 mL	2.3894 mL	4.7787 mL
				10 mM	0.2389 mL	1.1947 mL	2.3894 mL
Please refer to the solubility information to select the appropriate solvent.							
In Vivo	1. Add each solvent one by one: 10% DMSO >> 40% PEG300 >> 5% Tween-80 >> 45% saline Solubility: ≥ 2.5 mg/mL (5.97 mM); Clear solution						
	2. Add each solvent one by one: 10% DMSO >> 90% corn oil Solubility: ≥ 2.5 mg/mL (5.97 mM); Clear solution						

BIOLOGICAL ACTIVITY

Description	Phyllanthin is a major bioactive lignan component of <i>Phyllanthus amarus</i> . Phyllanthin exhibits high antioxidative and hepatoprotective properties ^[1] .
-------------	---

REFERENCES

[1]. Hanh ND, et al. Physicochemical characterization of phyllanthin from *Phyllanthus amarus* Schum. et Thonn. *Drug Dev Ind Pharm.* 2014 Jun;40(6):793-802.

Caution: Product has not been fully validated for medical applications. For research use only.

Tel: 609-228-6898

Fax: 609-228-5909

E-mail: tech@MedChemExpress.com

Address: 1 Deer Park Dr, Suite Q, Monmouth Junction, NJ 08852, USA