



SZABO SCANDIC

Part of Europa Biosite

Produktinformation



Forschungsprodukte & Biochemikalien



Zellkultur & Verbrauchsmaterial



Diagnostik & molekulare Diagnostik



Laborgeräte & Service

Weitere Information auf den folgenden Seiten!
See the following pages for more information!



Lieferung & Zahlungsart

siehe unsere [Liefer- und Versandbedingungen](#)

Zuschläge

- Mindermengenzuschlag
- Trockeneiszuschlag
- Gefahrgutzuschlag
- Expressversand

SZABO-SCANDIC HandelsgmbH

Quellenstraße 110, A-1100 Wien

T. +43(0)1 489 3961-0

F. +43(0)1 489 3961-7

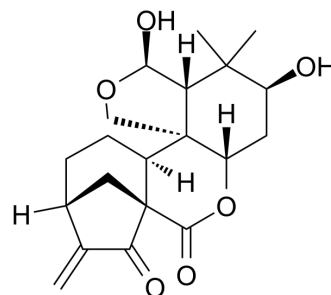
mail@szabo-scandic.com

www.szabo-scandic.com

[linkedin.com/company/szaboscandic](https://www.linkedin.com/company/szaboscandic) 

Enmein

Cat. No.:	HY-N5028
CAS No.:	3776-39-4
Molecular Formula:	C ₂₀ H ₂₆ O ₆
Molecular Weight:	362.42
Target:	Others
Pathway:	Others
Storage:	Please store the product under the recommended conditions in the Certificate of Analysis.



BIOLOGICAL ACTIVITY

Description	Enmein is isolated from <i>I. serra</i> with immunosuppressive effect ^[1] .																
In Vitro	<p>Enmein shows significant inhibitory effect toward K562 with an IC₅₀ value ranging from 3.2 µg/ml to 8.2 µg/ml^[2]. Enmein (3.13-25 µg/ml; 48 hours) has inhibitory effect on lymphocytes with significant difference within concentration from 6.25 µg/ml to 25 µg/ml^[1].</p> <p>Enmein (5.5-22 µg/ml; 48 hours) causes the percentage of S stage cells decreased from 19% to 6%, causes the percentage of G2/M stage cells to decrease from 2% to 0.4%^[1].</p> <p>MCE has not independently confirmed the accuracy of these methods. They are for reference only.</p> <p>Cell Viability Assay^[1]</p> <table border="1"> <tr> <td>Cell Line:</td> <td>Splenic lymphocyte cells</td> </tr> <tr> <td>Concentration:</td> <td>3.13, 6.25, 12.5, 25 µg/ml</td> </tr> <tr> <td>Incubation Time:</td> <td>48 hours</td> </tr> <tr> <td>Result:</td> <td>Exhibited an IC⁵⁰ value of 17 µg/ml in splenic lymphocytes.</td> </tr> </table> <p>Cell Cycle Analysis^[1]</p> <table border="1"> <tr> <td>Cell Line:</td> <td>Splenic lymphocyte cells</td> </tr> <tr> <td>Concentration:</td> <td>5.5 µg/ml, 11 µg/ml, 22 µg/ml</td> </tr> <tr> <td>Incubation Time:</td> <td>48 hours</td> </tr> <tr> <td>Result:</td> <td>Caused S stage cells and G2/M stage cells decreased.</td> </tr> </table>	Cell Line:	Splenic lymphocyte cells	Concentration:	3.13, 6.25, 12.5, 25 µg/ml	Incubation Time:	48 hours	Result:	Exhibited an IC ⁵⁰ value of 17 µg/ml in splenic lymphocytes.	Cell Line:	Splenic lymphocyte cells	Concentration:	5.5 µg/ml, 11 µg/ml, 22 µg/ml	Incubation Time:	48 hours	Result:	Caused S stage cells and G2/M stage cells decreased.
	Cell Line:	Splenic lymphocyte cells															
	Concentration:	3.13, 6.25, 12.5, 25 µg/ml															
	Incubation Time:	48 hours															
	Result:	Exhibited an IC ⁵⁰ value of 17 µg/ml in splenic lymphocytes.															
	Cell Line:	Splenic lymphocyte cells															
	Concentration:	5.5 µg/ml, 11 µg/ml, 22 µg/ml															
	Incubation Time:	48 hours															
	Result:	Caused S stage cells and G2/M stage cells decreased.															
	In Vivo	<p>Enmein (inject to ear; 6.52-13.04 mg/kg; 5 days) inhibits the xylene-induced ear swelling and inhibits IL-2 expression^[1]. MCE has not independently confirmed the accuracy of these methods. They are for reference only.</p> <table border="1"> <tr> <td>Animal Model:</td> <td>Balb/c mice^[1]</td> </tr> <tr> <td>Dosage:</td> <td>6.52 mg/kg, 9.78 mg/kg or 13.04 mg/kg</td> </tr> </table>	Animal Model:	Balb/c mice ^[1]	Dosage:	6.52 mg/kg, 9.78 mg/kg or 13.04 mg/kg											
Animal Model:		Balb/c mice ^[1]															
Dosage:		6.52 mg/kg, 9.78 mg/kg or 13.04 mg/kg															

Administration:	Injected to ear; 6.52 mg/kg, 9.78 mg/kg or 13.04 mg/kg; 5 days
Result:	Had inhibitory effect on IL-2 release in blood.

REFERENCES

- [1]. Zhang Y, et al. Distinct immunosuppressive effect by Isodon serra extracts. *Int Immunopharmacol.* 2005 Dec;5(13-14):1957-65. Epub 2005 Jul 13.
- [2]. Jiang B, et al. Cytotoxic ent-kaurane diterpenoids from *Isodon sculponeata*. *Planta Med.* 2002 Oct;68(10):921-5.
-

Caution: Product has not been fully validated for medical applications. For research use only.

Tel: 609-228-6898 Fax: 609-228-5909 E-mail: tech@MedChemExpress.com

Address: 1 Deer Park Dr, Suite Q, Monmouth Junction, NJ 08852, USA