



SZABO SCANDIC

Part of Europa Biosite

Produktinformation



Forschungsprodukte & Biochemikalien



Zellkultur & Verbrauchsmaterial



Diagnostik & molekulare Diagnostik



Laborgeräte & Service

Weitere Information auf den folgenden Seiten!
See the following pages for more information!



Lieferung & Zahlungsart

siehe unsere [Liefer- und Versandbedingungen](#)

Zuschläge

- Mindermengenzuschlag
- Trockeneiszuschlag
- Gefahrgutzuschlag
- Expressversand

SZABO-SCANDIC HandelsgmbH

Quellenstraße 110, A-1100 Wien

T. +43(0)1 489 3961-0

F. +43(0)1 489 3961-7

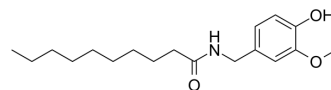
mail@szabo-scandic.com

www.szabo-scandic.com

[linkedin.com/company/szaboscandic](https://www.linkedin.com/company/szaboscandic) 

N-Vanillyldecanamide

Cat. No.:	HY-N5099
CAS No.:	31078-36-1
Molecular Formula:	C ₁₈ H ₂₉ NO ₃
Molecular Weight:	307.43
Target:	Others
Pathway:	Others
Storage:	4°C, protect from light * In solvent : -80°C, 6 months; -20°C, 1 month (protect from light)



SOLVENT & SOLUBILITY

In Vitro	DMSO : 250 mg/mL (813.19 mM; Need ultrasonic)						
	Preparing Stock Solutions	Solvent Concentration	Mass	1 mg	5 mg	10 mg	
				1 mM	3.2528 mL	16.2639 mL	32.5277 mL
				5 mM	0.6506 mL	3.2528 mL	6.5055 mL
				10 mM	0.3253 mL	1.6264 mL	3.2528 mL
Please refer to the solubility information to select the appropriate solvent.							
In Vivo	1. Add each solvent one by one: 10% DMSO >> 40% PEG300 >> 5% Tween-80 >> 45% saline Solubility: 2.08 mg/mL (6.77 mM); Suspended solution; Need ultrasonic						
	2. Add each solvent one by one: 10% DMSO >> 90% (20% SBE-β-CD in saline) Solubility: ≥ 2.08 mg/mL (6.77 mM); Clear solution						
	3. Add each solvent one by one: 10% DMSO >> 90% corn oil Solubility: ≥ 2.08 mg/mL (6.77 mM); Clear solution						

BIOLOGICAL ACTIVITY

Description	N-Vanillyldecanamide, a capsaicinoid isolated from the fruits of <i>Capsicum annum</i> , significantly reduced the radical length of <i>Lactuca sativa</i> seedling in a dose-dependent manner ^[1] .
In Vivo	☒☒☒ MCE has not independently confirmed the accuracy of these methods. They are for reference only.

REFERENCES

Caution: Product has not been fully validated for medical applications. For research use only.

Tel: 609-228-6898

Fax: 609-228-5909

E-mail: tech@MedChemExpress.com

Address: 1 Deer Park Dr, Suite Q, Monmouth Junction, NJ 08852, USA