



SZABO SCANDIC

Part of Europa Biosite

Produktinformation



Forschungsprodukte & Biochemikalien



Zellkultur & Verbrauchsmaterial



Diagnostik & molekulare Diagnostik



Laborgeräte & Service

Weitere Information auf den folgenden Seiten!
See the following pages for more information!



Lieferung & Zahlungsart

siehe unsere [Liefer- und Versandbedingungen](#)

Zuschläge

- Mindermengenzuschlag
- Trockeneiszuschlag
- Gefahrgutzuschlag
- Expressversand

SZABO-SCANDIC HandelsgmbH

Quellenstraße 110, A-1100 Wien

T. +43(0)1 489 3961-0

F. +43(0)1 489 3961-7

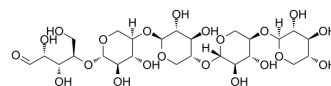
mail@szabo-scandic.com

www.szabo-scandic.com

[linkedin.com/company/szaboscandic](https://www.linkedin.com/company/szaboscandic) 

1,4-b-D-Xylopentaose

Cat. No.:	HY-N6839
CAS No.:	49694-20-4
Molecular Formula:	C ₂₅ H ₄₂ O ₂₁
Molecular Weight:	678.59
Target:	Others
Pathway:	Others
Storage:	4°C, protect from light * In solvent : -80°C, 6 months; -20°C, 1 month (protect from light)



SOLVENT & SOLUBILITY

In Vitro

H₂O : 100 mg/mL (147.36 mM; Need ultrasonic)

Preparing Stock Solutions	Solvent		1 mg	5 mg	10 mg
	Concentration	Mass			
	1 mM		1.4736 mL	7.3682 mL	14.7364 mL
	5 mM		0.2947 mL	1.4736 mL	2.9473 mL
	10 mM		0.1474 mL	0.7368 mL	1.4736 mL

Please refer to the solubility information to select the appropriate solvent.

BIOLOGICAL ACTIVITY

Description

1,4-b-D-Xylopentaose (Xylopentaose) consists of five b-1,4 xylose sugars^[1].

REFERENCES

[1]. von Schantz L, et al. Carbohydrate binding module recognition of xyloglucan defined by polar contacts with branching xyloses and CH-π interactions. *Proteins*. 2014 Dec;82(12):3466-75.

Caution: Product has not been fully validated for medical applications. For research use only.

Tel: 609-228-6898

Fax: 609-228-5909

E-mail: tech@MedChemExpress.com

Address: 1 Deer Park Dr, Suite Q, Monmouth Junction, NJ 08852, USA