



SZABO SCANDIC

Part of Europa Biosite

Produktinformation



Forschungsprodukte & Biochemikalien



Zellkultur & Verbrauchsmaterial



Diagnostik & molekulare Diagnostik



Laborgeräte & Service

Weitere Information auf den folgenden Seiten!
See the following pages for more information!



Lieferung & Zahlungsart

siehe unsere [Liefer- und Versandbedingungen](#)

Zuschläge

- Mindermengenzuschlag
- Trockeneiszuschlag
- Gefahrgutzuschlag
- Expressversand

SZABO-SCANDIC HandelsgmbH

Quellenstraße 110, A-1100 Wien

T. +43(0)1 489 3961-0

F. +43(0)1 489 3961-7

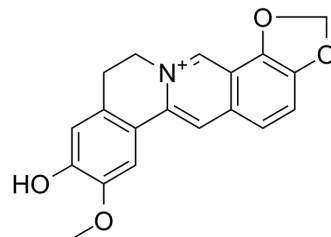
mail@szabo-scandic.com

www.szabo-scandic.com

[linkedin.com/company/szaboscandic](https://www.linkedin.com/company/szaboscandic) 

Groenlandicine

| | |
|---------------------------|--|
| Cat. No.: | HY-N6865 |
| CAS No.: | 38691-95-1 |
| Molecular Formula: | C ₁₉ H ₁₆ NO ₄ ⁺ |
| Molecular Weight: | 322.33 |
| Target: | Topoisomerase |
| Pathway: | Cell Cycle/DNA Damage |
| Storage: | 4°C, protect from light * In solvent : -80°C, 6 months; -20°C, 1 month (protect from light) |



SOLVENT & SOLUBILITY

In Vitro

DMSO : 1 mg/mL (3.10 mM; ultrasonic and warming and heat to 60°C)

| Concentration | Solvent | Mass | | |
|---------------------------|---------|-----------|------------|------------|
| | | 1 mg | 5 mg | 10 mg |
| Preparing Stock Solutions | 1 mM | 3.1024 mL | 15.5121 mL | 31.0241 mL |
| | 5 mM | --- | --- | --- |
| | 10 mM | --- | --- | --- |

Please refer to the solubility information to select the appropriate solvent.

BIOLOGICAL ACTIVITY

Description

Groenlandicine is a protoberberine alkaloid isolated from *Coptidis Rhizoma*. Groenlandicine exhibits moderate inhibitory effect with IC₅₀ value of 154.2 μM for human recombinant aldose reductase (HRAR)^[1]. Groenlandicine selectively induces topoisomerase I-mediated DNA cleavage^[2].

IC₅₀ & Target

Topoisomerase I

REFERENCES

- [1]. Jung HA, et al. Inhibitory activities of the alkaloids from *Coptidis Rhizoma* against aldose reductase. Arch Pharm Res. 2008 Nov;31(11):1405-12.
- [2]. Kobayashi Y, et al. Inhibitors of DNA topoisomerase I and II isolated from the *Coptis rhizomes*. Planta Med. 1995 Oct;61(5):414-8.

Caution: Product has not been fully validated for medical applications. For research use only.

Tel: 609-228-6898

Fax: 609-228-5909

E-mail: tech@MedChemExpress.com

Address: 1 Deer Park Dr, Suite Q, Monmouth Junction, NJ 08852, USA