



# SZABO SCANDIC

Part of Europa Biosite

## Produktinformation



Forschungsprodukte & Biochemikalien



Zellkultur & Verbrauchsmaterial



Diagnostik & molekulare Diagnostik



Laborgeräte & Service

Weitere Information auf den folgenden Seiten!  
See the following pages for more information!



### Lieferung & Zahlungsart

siehe unsere [Liefer- und Versandbedingungen](#)

### Zuschläge

- Mindermengenzuschlag
- Trockeneiszuschlag
- Gefahrgutzuschlag
- Expressversand

### SZABO-SCANDIC HandelsgmbH

Quellenstraße 110, A-1100 Wien

T. +43(0)1 489 3961-0

F. +43(0)1 489 3961-7

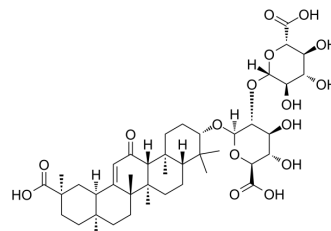
[mail@szabo-scandic.com](mailto:mail@szabo-scandic.com)

[www.szabo-scandic.com](http://www.szabo-scandic.com)

[linkedin.com/company/szaboscandic](https://www.linkedin.com/company/szaboscandic) 

## Licorice-saponin H2

<b>Cat. No.:</b>	HY-N6911
<b>CAS No.:</b>	118441-85-3
<b>Molecular Formula:</b>	C <sub>42</sub> H <sub>62</sub> O <sub>16</sub>
<b>Molecular Weight:</b>	822.93
<b>Target:</b>	Others
<b>Pathway:</b>	Others
<b>Storage:</b>	4°C, sealed storage, away from moisture and light * In solvent : -80°C, 6 months; -20°C, 1 month (sealed storage, away from moisture and light)



### SOLVENT & SOLUBILITY

#### In Vitro

DMSO : 100 mg/mL (121.52 mM; Need ultrasonic)

Concentration	Solvent	Mass		
		1 mg	5 mg	10 mg
Preparing Stock Solutions	1 mM	1.2152 mL	6.0759 mL	12.1517 mL
	5 mM	0.2430 mL	1.2152 mL	2.4303 mL
	10 mM	0.1215 mL	0.6076 mL	1.2152 mL

Please refer to the solubility information to select the appropriate solvent.

### BIOLOGICAL ACTIVITY

#### Description

Licorice-saponin H2 ((18β,20α)-Glycyrrhizic acid) is a saponin from *Glycyrrhiza uralensis* Fischer<sup>[1]</sup>.

### REFERENCES

[1]. Kitagawa I, et al. Saponin and sapogenol. XLVIII. On the constituents of the roots of *Glycyrrhiza uralensis* Fischer from northeastern China. (2). Licorice-saponins D3, E2, F3, G2, H2, J2, and K2. *Chem Pharm Bull (Tokyo)*. 1993 Aug;41(8):1337-45.

**Caution: Product has not been fully validated for medical applications. For research use only.**

Tel: 609-228-6898

Fax: 609-228-5909

E-mail: tech@MedChemExpress.com

Address: 1 Deer Park Dr, Suite Q, Monmouth Junction, NJ 08852, USA