



SZABO SCANDIC

Part of Europa Biosite

Produktinformation



Forschungsprodukte & Biochemikalien



Zellkultur & Verbrauchsmaterial



Diagnostik & molekulare Diagnostik



Laborgeräte & Service

Weitere Information auf den folgenden Seiten!
See the following pages for more information!



Lieferung & Zahlungsart

siehe unsere [Liefer- und Versandbedingungen](#)

Zuschläge

- Mindermengenzuschlag
- Trockeneiszuschlag
- Gefahrgutzuschlag
- Expressversand

SZABO-SCANDIC HandelsgmbH

Quellenstraße 110, A-1100 Wien

T. +43(0)1 489 3961-0

F. +43(0)1 489 3961-7

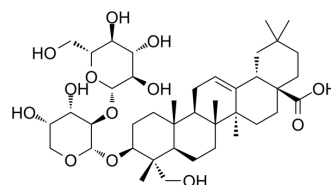
mail@szabo-scandic.com

www.szabo-scandic.com

[linkedin.com/company/szaboscandic](https://www.linkedin.com/company/szaboscandic) 

Cauloside C

Cat. No.:	HY-N6919
CAS No.:	20853-58-1
Molecular Formula:	C ₄₁ H ₆₆ O ₁₃
Molecular Weight:	766.95
Target:	NO Synthase
Pathway:	Immunology/Inflammation
Storage:	4°C, protect from light * In solvent : -80°C, 6 months; -20°C, 1 month (protect from light)



SOLVENT & SOLUBILITY

In Vitro	DMSO : 100 mg/mL (130.39 mM; Need ultrasonic)				
	Preparing Stock Solutions	Solvent Concentration \ Mass	1 mg	5 mg	10 mg
		1 mM	1.3039 mL	6.5193 mL	13.0387 mL
		5 mM	0.2608 mL	1.3039 mL	2.6077 mL
		10 mM	0.1304 mL	0.6519 mL	1.3039 mL
Please refer to the solubility information to select the appropriate solvent.					
In Vivo	1. Add each solvent one by one: 10% DMSO >> 40% PEG300 >> 5% Tween-80 >> 45% saline Solubility: ≥ 2.5 mg/mL (3.26 mM); Clear solution				
	2. Add each solvent one by one: 10% DMSO >> 90% (20% SBE-β-CD in saline) Solubility: ≥ 2.5 mg/mL (3.26 mM); Clear solution				
	3. Add each solvent one by one: 10% DMSO >> 90% corn oil Solubility: ≥ 2.5 mg/mL (3.26 mM); Clear solution				

BIOLOGICAL ACTIVITY

Description	Cauloside C is a triterpene glycoside isolated from <i>Caulophyllum robustum</i> Max. Cauloside C exerts anti-inflammatory effects through the inhibition of expression of iNOS and proinflammatory cytokines ^[1] .
IC ₅₀ & Target	iNOS

REFERENCES

[1]. Lee Y, et al. Anti-Inflammatory Effect of Triterpene Saponins Isolated from Blue Cohosh (*Caulophyllum thalictroides*). Evid Based Complement Alternat Med. 2012;2012:798192.

Caution: Product has not been fully validated for medical applications. For research use only.

Tel: 609-228-6898

Fax: 609-228-5909

E-mail: tech@MedChemExpress.com

Address: 1 Deer Park Dr, Suite Q, Monmouth Junction, NJ 08852, USA