



# SZABO SCANDIC

Part of Europa Biosite

## Produktinformation



Forschungsprodukte & Biochemikalien



Zellkultur & Verbrauchsmaterial



Diagnostik & molekulare Diagnostik



Laborgeräte & Service

Weitere Information auf den folgenden Seiten!  
See the following pages for more information!



### Lieferung & Zahlungsart

siehe unsere [Liefer- und Versandbedingungen](#)

### Zuschläge

- Mindermengenzuschlag
- Trockeneiszuschlag
- Gefahrgutzuschlag
- Expressversand

### SZABO-SCANDIC HandelsgmbH

Quellenstraße 110, A-1100 Wien

T. +43(0)1 489 3961-0

F. +43(0)1 489 3961-7

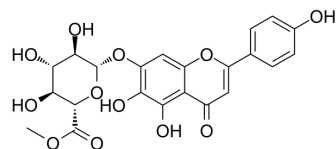
[mail@szabo-scandic.com](mailto:mail@szabo-scandic.com)

[www.szabo-scandic.com](http://www.szabo-scandic.com)

[linkedin.com/company/szaboscandic](https://www.linkedin.com/company/szaboscandic) 

## Scutellarin methyl ester

Cat. No.:	HY-N6925
CAS No.:	119262-68-9
Molecular Formula:	C <sub>22</sub> H <sub>20</sub> O <sub>12</sub>
Molecular Weight:	476.39
Target:	Others
Pathway:	Others
Storage:	4°C, protect from light * In solvent : -80°C, 6 months; -20°C, 1 month (protect from light)



### SOLVENT & SOLUBILITY

#### In Vitro

DMSO : 25 mg/mL (52.48 mM; ultrasonic and warming and heat to 60°C)

Preparing Stock Solutions	Solvent		1 mg	5 mg	10 mg
	Concentration	Mass			
	1 mM		2.0991 mL	10.4956 mL	20.9912 mL
	5 mM		0.4198 mL	2.0991 mL	4.1982 mL
	10 mM		0.2099 mL	1.0496 mL	2.0991 mL

Please refer to the solubility information to select the appropriate solvent.

### BIOLOGICAL ACTIVITY

#### Description

Scutellarin methyl ester is a constituent of Breviscapine which is a crude extract of several flavonoids of Erigeron breviscapus<sup>[1][2]</sup>.

### REFERENCES

- [1]. Zhao M, et al. Structural identification of related substances in Breviscapine by UPLC-QTOF-MS. Zhongguo Zhong Yao Za Zhi. 2018 Jul;43(14):2872-2877.
- [2]. Gao J, et al. Therapeutic Effects of Breviscapine in Cardiovascular Diseases: A Review. Front Pharmacol. 2017 May 23;8:289.

**Caution: Product has not been fully validated for medical applications. For research use only.**

Tel: 609-228-6898

Fax: 609-228-5909

E-mail: tech@MedChemExpress.com

Address: 1 Deer Park Dr, Suite Q, Monmouth Junction, NJ 08852, USA