



# SZABO SCANDIC

Part of Europa Biosite

## Produktinformation



Forschungsprodukte & Biochemikalien



Zellkultur & Verbrauchsmaterial



Diagnostik & molekulare Diagnostik



Laborgeräte & Service

Weitere Information auf den folgenden Seiten!  
See the following pages for more information!



### Lieferung & Zahlungsart

siehe unsere [Liefer- und Versandbedingungen](#)

### Zuschläge

- Mindermengenzuschlag
- Trockeneiszuschlag
- Gefahrgutzuschlag
- Expressversand

### SZABO-SCANDIC HandelsgmbH

Quellenstraße 110, A-1100 Wien

T. +43(0)1 489 3961-0

F. +43(0)1 489 3961-7

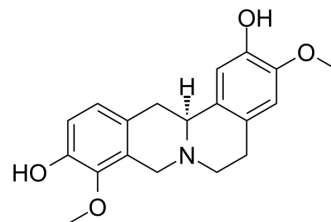
[mail@szabo-scandic.com](mailto:mail@szabo-scandic.com)

[www.szabo-scandic.com](http://www.szabo-scandic.com)

[linkedin.com/company/szaboscandic](https://www.linkedin.com/company/szaboscandic) 

## L-Stepholidine

<b>Cat. No.:</b>	HY-N6960
<b>CAS No.:</b>	16562-13-3
<b>Molecular Formula:</b>	C <sub>19</sub> H <sub>21</sub> NO <sub>4</sub>
<b>Molecular Weight:</b>	327.37
<b>Target:</b>	Dopamine Receptor
<b>Pathway:</b>	GPCR/G Protein; Neuronal Signaling
<b>Storage:</b>	4°C, protect from light * In solvent : -80°C, 6 months; -20°C, 1 month (protect from light)



### SOLVENT & SOLUBILITY

#### In Vitro

DMSO : 100 mg/mL (305.46 mM; ultrasonic and warming and heat to 60°C)

Concentration	Mass			
	1 mg	5 mg	10 mg	
1 mM	3.0546 mL	15.2732 mL	30.5465 mL	
5 mM	0.6109 mL	3.0546 mL	6.1093 mL	
10 mM	0.3055 mL	1.5273 mL	3.0546 mL	

Please refer to the solubility information to select the appropriate solvent.

### BIOLOGICAL ACTIVITY

#### Description

L-Stepholidine (Stepholidine) exhibits mixed dopamine D1 receptor agonist and D2 antagonist properties. L-Stepholidine has neuroprotective effect and inhibits Heroin-induced reinstatement. L-Stepholidine is a potential medication for the research of opiate addiction<sup>[1][2][3]</sup>.

#### IC<sub>50</sub> & Target

Dopamine D1 receptor<sup>[1]</sup>  
Dopamine D2 receptor<sup>[1]</sup>

### REFERENCES

- [1]. Ma B, et al. L-stepholidine, a natural dopamine receptor D1 agonist and D2 antagonist, inhibits heroin-induced reinstatement. *Neurosci Lett.* 2014 Jan 24;559:67-71.
- [2]. Zhou M, et al. The Neuroprotective Effect of L-Stepholidine on Methamphetamine-Induced Memory Deficits in Mice. *Neurotox Res.* 2019 Aug;36(2):376-386.
- [3]. Wang W, et al. The effect of L-stepholidine, a novel extract of Chinese herb, on the acquisition, expression, maintenance, and re-acquisition of morphine conditioned place preference in rats. *Neuropharmacology.* 2007 Feb;52(2):355-61. Epub 2006 Oct 5.

---

**Caution: Product has not been fully validated for medical applications. For research use only.**

Tel: 609-228-6898

Fax: 609-228-5909

E-mail: [tech@MedChemExpress.com](mailto:tech@MedChemExpress.com)

Address: 1 Deer Park Dr, Suite Q, Monmouth Junction, NJ 08852, USA