



# SZABO SCANDIC

Part of Europa Biosite

## Produktinformation



Forschungsprodukte & Biochemikalien



Zellkultur & Verbrauchsmaterial



Diagnostik & molekulare Diagnostik



Laborgeräte & Service

Weitere Information auf den folgenden Seiten!  
See the following pages for more information!



### Lieferung & Zahlungsart

siehe unsere [Liefer- und Versandbedingungen](#)

### Zuschläge

- Mindermengenzuschlag
- Trockeneiszuschlag
- Gefahrgutzuschlag
- Expressversand

### SZABO-SCANDIC HandelsgmbH

Quellenstraße 110, A-1100 Wien

T. +43(0)1 489 3961-0

F. +43(0)1 489 3961-7

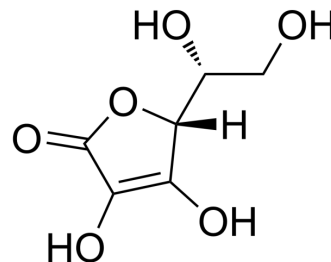
[mail@szabo-scandic.com](mailto:mail@szabo-scandic.com)

[www.szabo-scandic.com](http://www.szabo-scandic.com)

[linkedin.com/company/szaboscandic](https://www.linkedin.com/company/szaboscandic) 

## Erythorbic acid

<b>Cat. No.:</b>	HY-N7079
<b>CAS No.:</b>	89-65-6
<b>Molecular Formula:</b>	C <sub>6</sub> H <sub>8</sub> O <sub>6</sub>
<b>Molecular Weight:</b>	176.12
<b>Target:</b>	Biochemical Assay Reagents
<b>Pathway:</b>	Others
<b>Storage:</b>	4°C, protect from light, stored under nitrogen * In solvent : -80°C, 6 months; -20°C, 1 month (protect from light, stored under nitrogen)



### SOLVENT & SOLUBILITY

#### In Vitro

DMSO : 125 mg/mL (709.74 mM; Need ultrasonic)  
H<sub>2</sub>O : 83.33 mg/mL (473.14 mM; Need ultrasonic)

Preparing Stock Solutions	Solvent Concentration	Mass		
		1 mg	5 mg	10 mg
	1 mM	5.6779 mL	28.3897 mL	56.7795 mL
	5 mM	1.1356 mL	5.6779 mL	11.3559 mL
	10 mM	0.5678 mL	2.8390 mL	5.6779 mL

Please refer to the solubility information to select the appropriate solvent.

#### In Vivo

1. Add each solvent one by one: PBS  
Solubility: 100 mg/mL (567.79 mM); Clear solution; Need ultrasonic

### BIOLOGICAL ACTIVITY

#### Description

Erythorbic acid (D-Isoascorbic acid), produced from sugars derived from different sources, such as beets, sugar cane, and corn, is a food additive used predominantly in meats, poultry, and soft drinks.

**Caution: Product has not been fully validated for medical applications. For research use only.**

Tel: 609-228-6898

Fax: 609-228-5909

E-mail: tech@MedChemExpress.com

Address: 1 Deer Park Dr, Suite Q, Monmouth Junction, NJ 08852, USA