



SZABO SCANDIC

Part of Europa Biosite

Produktinformation



Forschungsprodukte & Biochemikalien



Zellkultur & Verbrauchsmaterial



Diagnostik & molekulare Diagnostik



Laborgeräte & Service

Weitere Information auf den folgenden Seiten!
See the following pages for more information!



Lieferung & Zahlungsart

siehe unsere [Liefer- und Versandbedingungen](#)

Zuschläge

- Mindermengenzuschlag
- Trockeneiszuschlag
- Gefahrgutzuschlag
- Expressversand

SZABO-SCANDIC HandelsgmbH

Quellenstraße 110, A-1100 Wien

T. +43(0)1 489 3961-0

F. +43(0)1 489 3961-7

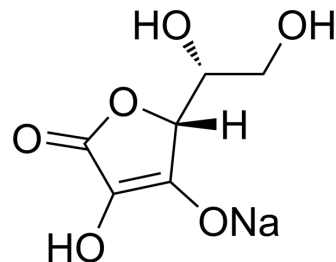
mail@szabo-scandic.com

www.szabo-scandic.com

[linkedin.com/company/szaboscandic](https://www.linkedin.com/company/szaboscandic) 

Sodium erythorbate

Cat. No.:	HY-N7079A
CAS No.:	6381-77-7
Molecular Formula:	C ₆ H ₇ NaO ₆
Molecular Weight:	198.11
Target:	Biochemical Assay Reagents
Pathway:	Others
Storage:	4°C, sealed storage, away from moisture and light * In solvent : -80°C, 6 months; -20°C, 1 month (sealed storage, away from moisture and light)



SOLVENT & SOLUBILITY

In Vitro	DMSO : 50 mg/mL (252.39 mM; Need ultrasonic)				
		Solvent Concentration	Mass		
	Preparing Stock Solutions		1 mg	5 mg	10 mg
		1 mM	5.0477 mL	25.2385 mL	50.4770 mL
		5 mM	1.0095 mL	5.0477 mL	10.0954 mL
	10 mM	0.5048 mL	2.5239 mL	5.0477 mL	
Please refer to the solubility information to select the appropriate solvent.					
In Vivo	1. Add each solvent one by one: 10% DMSO >> 40% PEG300 >> 5% Tween-80 >> 45% saline Solubility: ≥ 2.5 mg/mL (12.62 mM); Clear solution				
	2. Add each solvent one by one: 10% DMSO >> 90% (20% SBE-β-CD in saline) Solubility: ≥ 2.5 mg/mL (12.62 mM); Clear solution				

BIOLOGICAL ACTIVITY

Description	Sodium erythorbate (D-Isoascorbic acid sodium), produced from sugars derived from different sources, such as beets, sugar cane, and corn, is a food additive used predominantly in meats, poultry, and soft drinks.
--------------------	---

Caution: Product has not been fully validated for medical applications. For research use only.

Tel: 609-228-6898

Fax: 609-228-5909

E-mail: tech@MedChemExpress.com

Address: 1 Deer Park Dr, Suite Q, Monmouth Junction, NJ 08852, USA