



SZABO SCANDIC

Part of Europa Biosite

Produktinformation



Forschungsprodukte & Biochemikalien



Zellkultur & Verbrauchsmaterial



Diagnostik & molekulare Diagnostik



Laborgeräte & Service

Weitere Information auf den folgenden Seiten!
See the following pages for more information!



Lieferung & Zahlungsart

siehe unsere [Liefer- und Versandbedingungen](#)

Zuschläge

- Mindermengenzuschlag
- Trockeneiszuschlag
- Gefahrgutzuschlag
- Expressversand

SZABO-SCANDIC HandelsgmbH

Quellenstraße 110, A-1100 Wien

T. +43(0)1 489 3961-0

F. +43(0)1 489 3961-7

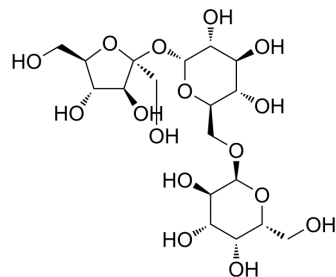
mail@szabo-scandic.com

www.szabo-scandic.com

[linkedin.com/company/szaboscandic](https://www.linkedin.com/company/szaboscandic) 

Raffinose

Cat. No.:	HY-N7088
CAS No.:	512-69-6
Molecular Formula:	C ₁₈ H ₃₂ O ₁₆
Molecular Weight:	504.44
Target:	Endogenous Metabolite
Pathway:	Metabolic Enzyme/Protease
Storage:	4°C, sealed storage, away from moisture * In solvent : -80°C, 6 months; -20°C, 1 month (sealed storage, away from moisture)



SOLVENT & SOLUBILITY

In Vitro

H₂O : 250 mg/mL (495.60 mM; Need ultrasonic)
DMSO : 100 mg/mL (198.24 mM; Need ultrasonic)

Preparing Stock Solutions	Solvent Concentration	Mass	1 mg	5 mg	10 mg
		1 mM	1.9824 mL	9.9120 mL	19.8240 mL
	5 mM	0.3965 mL	1.9824 mL	3.9648 mL	
	10 mM	0.1982 mL	0.9912 mL	1.9824 mL	

Please refer to the solubility information to select the appropriate solvent.

In Vivo

- Add each solvent one by one: PBS
Solubility: 50 mg/mL (99.12 mM); Clear solution; Need ultrasonic
- Add each solvent one by one: 10% DMSO >> 40% PEG300 >> 5% Tween-80 >> 45% saline
Solubility: ≥ 2.5 mg/mL (4.96 mM); Clear solution
- Add each solvent one by one: 10% DMSO >> 90% (20% SBE-β-CD in saline)
Solubility: ≥ 2.5 mg/mL (4.96 mM); Clear solution
- Add each solvent one by one: 10% DMSO >> 90% corn oil
Solubility: ≥ 2.5 mg/mL (4.96 mM); Clear solution

BIOLOGICAL ACTIVITY

Description

Raffinose (Melitose), a non-digestible short-chain oligosaccharide, is a trisaccharide composed of galactose, glucose, and fructose and can be found in many plants. Raffinose (Melitose) can be hydrolyzed to D-galactose and sucrose by the enzyme α-galactosidase (α-GAL)^[1].

IC₅₀ & Target

IC₅₀: short-chain oligosaccharide^[1]

CUSTOMER VALIDATION

- Autophagy. 2022 Nov 30.

See more customer validations on www.MedChemExpress.com

REFERENCES

[1]. Raffinose

Caution: Product has not been fully validated for medical applications. For research use only.

Tel: 609-228-6898

Fax: 609-228-5909

E-mail: tech@MedChemExpress.com

Address: 1 Deer Park Dr, Suite Q, Monmouth Junction, NJ 08852, USA