



# SZABO SCANDIC

Part of Europa Biosite

## Produktinformation



Forschungsprodukte & Biochemikalien



Zellkultur & Verbrauchsmaterial



Diagnostik & molekulare Diagnostik



Laborgeräte & Service

Weitere Information auf den folgenden Seiten!  
See the following pages for more information!



### Lieferung & Zahlungsart

siehe unsere [Liefer- und Versandbedingungen](#)

### Zuschläge

- Mindermengenzuschlag
- Trockeneiszuschlag
- Gefahrgutzuschlag
- Expressversand

### SZABO-SCANDIC HandelsgmbH

Quellenstraße 110, A-1100 Wien

T. +43(0)1 489 3961-0

F. +43(0)1 489 3961-7

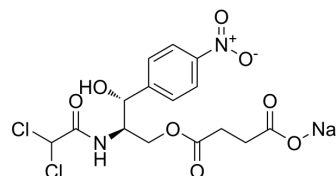
[mail@szabo-scandic.com](mailto:mail@szabo-scandic.com)

[www.szabo-scandic.com](http://www.szabo-scandic.com)

[linkedin.com/company/szaboscandic](https://www.linkedin.com/company/szaboscandic) 

## Chloramphenicol succinate sodium

<b>Cat. No.:</b>	HY-N7114A
<b>CAS No.:</b>	982-57-0
<b>Molecular Formula:</b>	C <sub>15</sub> H <sub>15</sub> Cl <sub>2</sub> N <sub>2</sub> NaO <sub>8</sub>
<b>Molecular Weight:</b>	445.18
<b>Target:</b>	Bacterial; Antibiotic
<b>Pathway:</b>	Anti-infection
<b>Storage:</b>	-20°C, protect from light, stored under argon * In solvent : -80°C, 6 months; -20°C, 1 month (protect from light, stored under argon)



### SOLVENT & SOLUBILITY

#### In Vitro

DMSO : 125 mg/mL (280.79 mM; Need ultrasonic)  
H<sub>2</sub>O : 50 mg/mL (112.31 mM; Need ultrasonic)

Concentration	Solvent	Mass		
		1 mg	5 mg	10 mg
Preparing Stock Solutions	1 mM	2.2463 mL	11.2314 mL	22.4628 mL
	5 mM	0.4493 mL	2.2463 mL	4.4926 mL
	10 mM	0.2246 mL	1.1231 mL	2.2463 mL

Please refer to the solubility information to select the appropriate solvent.

#### In Vivo

- Add each solvent one by one: PBS  
Solubility: 100 mg/mL (224.63 mM); Clear solution; Need ultrasonic
- Add each solvent one by one: 10% DMSO >> 40% PEG300 >> 5% Tween-80 >> 45% saline  
Solubility: ≥ 2.08 mg/mL (4.67 mM); Clear solution
- Add each solvent one by one: 10% DMSO >> 90% (20% SBE-β-CD in saline)  
Solubility: ≥ 2.08 mg/mL (4.67 mM); Clear solution
- Add each solvent one by one: 10% DMSO >> 90% corn oil  
Solubility: ≥ 2.08 mg/mL (4.67 mM); Clear solution

### BIOLOGICAL ACTIVITY

#### Description

Chloramphenicol succinate sodium is a proagent of Chloramphenicol, with Haemotoxicity. Chloramphenicol succinate is a competitive substrate and inhibitor of succinate dehydrogenase (SDH) that is the possible reason for its toxicity<sup>[1][2][3]</sup>.

---

## CUSTOMER VALIDATION

---

- Animal Diseases. 02 November 2021.

See more customer validations on [www.MedChemExpress.com](http://www.MedChemExpress.com)

---

## REFERENCES

---

- [1]. Ambrose PJ. Clinical pharmacokinetics of chloramphenicol and chloramphenicol succinate. Clin Pharmacokinet. 1984 May-Jun;9(3):222-38.
- [2]. Ambekar CS, et al. Chloramphenicol succinate, a competitive substrate and inhibitor of succinate dehydrogenase: possible reason for its toxicity. Toxicol In Vitro. 2004 Aug;18(4):441-7.
- [3]. Turton JA, et al. Haemotoxicity of chloramphenicol succinate in the CD-1 mouse and Wistar Hanover rat. Hum Exp Toxicol. 1999 Sep;18(9):566-76.
- 

**Caution: Product has not been fully validated for medical applications. For research use only.**

Tel: 609-228-6898

Fax: 609-228-5909

E-mail: [tech@MedChemExpress.com](mailto:tech@MedChemExpress.com)

Address: 1 Deer Park Dr, Suite Q, Monmouth Junction, NJ 08852, USA