



# SZABO SCANDIC

Part of Europa Biosite

## Produktinformation



Forschungsprodukte & Biochemikalien



Zellkultur & Verbrauchsmaterial



Diagnostik & molekulare Diagnostik



Laborgeräte & Service

Weitere Information auf den folgenden Seiten!  
See the following pages for more information!



### Lieferung & Zahlungsart

siehe unsere [Liefer- und Versandbedingungen](#)

### Zuschläge

- Mindermengenzuschlag
- Trockeneiszuschlag
- Gefahrgutzuschlag
- Expressversand

### SZABO-SCANDIC HandelsgmbH

Quellenstraße 110, A-1100 Wien

T. +43(0)1 489 3961-0

F. +43(0)1 489 3961-7

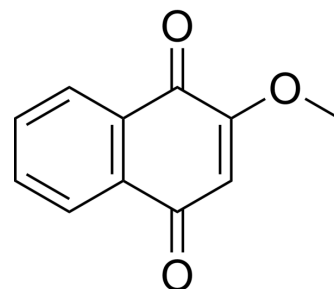
[mail@szabo-scandic.com](mailto:mail@szabo-scandic.com)

[www.szabo-scandic.com](http://www.szabo-scandic.com)

[linkedin.com/company/szaboscandic](https://www.linkedin.com/company/szaboscandic) 

## Lawsone methyl ether

<b>Cat. No.:</b>	HY-N7116		
<b>CAS No.:</b>	2348-82-5		
<b>Molecular Formula:</b>	C <sub>11</sub> H <sub>8</sub> O <sub>3</sub>		
<b>Molecular Weight:</b>	188.18		
<b>Target:</b>	Fungal; Bacterial		
<b>Pathway:</b>	Anti-infection		
<b>Storage:</b>	Powder	-20°C	3 years
		4°C	2 years
	In solvent	-80°C	6 months
		-20°C	1 month



### SOLVENT & SOLUBILITY

#### In Vitro

DMSO : 50 mg/mL (265.70 mM; Need ultrasonic)

Concentration	Solvent	Mass		
		1 mg	5 mg	10 mg
Preparing Stock Solutions	1 mM	5.3141 mL	26.5703 mL	53.1406 mL
	5 mM	1.0628 mL	5.3141 mL	10.6281 mL
	10 mM	0.5314 mL	2.6570 mL	5.3141 mL

Please refer to the solubility information to select the appropriate solvent.

### BIOLOGICAL ACTIVITY

#### Description

Lawsone methyl ether (2-Methoxy-1,4-naphthoquinone), isolated from *Impatiens balsamina* L. and *Swertia calycina*, exhibits potent antifungal and antibacterial activities<sup>[1]</sup>.

#### In Vitro

The value of both minimal inhibitory concentration and minimal fungicidal concentration of Lawsone methyl ether (2-Methoxy-1,4-naphthoquinone) against *Candida* was 1.25  $\mu$ g/ml<sup>[1]</sup>.  
MCE has not independently confirmed the accuracy of these methods. They are for reference only.

### REFERENCES

[1]. Sritrairat N, et al. Antifungal activity of lawsone methyl ether in comparison with chlorhexidine. *J Oral Pathol Med.* 2011 Jan;40(1):90-6.

---

**Caution: Product has not been fully validated for medical applications. For research use only.**

Tel: 609-228-6898

Fax: 609-228-5909

E-mail: [tech@MedChemExpress.com](mailto:tech@MedChemExpress.com)

Address: 1 Deer Park Dr, Suite Q, Monmouth Junction, NJ 08852, USA