



# SZABO SCANDIC

Part of Europa Biosite

## Produktinformation



Forschungsprodukte & Biochemikalien



Zellkultur & Verbrauchsmaterial



Diagnostik & molekulare Diagnostik



Laborgeräte & Service

Weitere Information auf den folgenden Seiten!  
See the following pages for more information!



### Lieferung & Zahlungsart

siehe unsere [Liefer- und Versandbedingungen](#)

### Zuschläge

- Mindermengenzuschlag
- Trockeneiszuschlag
- Gefahrgutzuschlag
- Expressversand

### SZABO-SCANDIC HandelsgmbH

Quellenstraße 110, A-1100 Wien

T. +43(0)1 489 3961-0

F. +43(0)1 489 3961-7

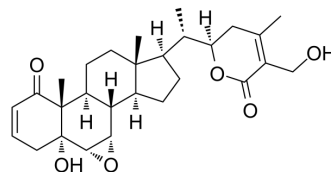
[mail@szabo-scandic.com](mailto:mail@szabo-scandic.com)

[www.szabo-scandic.com](http://www.szabo-scandic.com)

[linkedin.com/company/szaboscandic](https://www.linkedin.com/company/szaboscandic) 

## 12-Deoxywithastramonolide

<b>Cat. No.:</b>	HY-N7195		
<b>CAS No.:</b>	60124-17-6		
<b>Molecular Formula:</b>	C <sub>28</sub> H <sub>38</sub> O <sub>6</sub>		
<b>Molecular Weight:</b>	470.6		
<b>Target:</b>	Others		
<b>Pathway:</b>	Others		
<b>Storage:</b>	Powder	-20°C	3 years
		4°C	2 years
	In solvent	-80°C	6 months
		-20°C	1 month



### SOLVENT & SOLUBILITY

#### In Vitro

DMSO : 50 mg/mL (106.25 mM; Need ultrasonic)

Concentration	Mass		
	1 mg	5 mg	10 mg
1 mM	2.1249 mL	10.6247 mL	21.2495 mL
5 mM	0.4250 mL	2.1249 mL	4.2499 mL
10 mM	0.2125 mL	1.0625 mL	2.1249 mL

Please refer to the solubility information to select the appropriate solvent.

#### In Vivo

- Add each solvent one by one: 10% DMSO >> 40% PEG300 >> 5% Tween-80 >> 45% saline  
Solubility: ≥ 2.5 mg/mL (5.31 mM); Clear solution
- Add each solvent one by one: 10% DMSO >> 90% (20% SBE-β-CD in saline)  
Solubility: ≥ 2.5 mg/mL (5.31 mM); Clear solution
- Add each solvent one by one: 10% DMSO >> 90% corn oil  
Solubility: ≥ 2.5 mg/mL (5.31 mM); Clear solution

### BIOLOGICAL ACTIVITY

#### Description

12-Deoxywithastramonolide is a principle bioactive compound found in ashwagandha (*W. somnifera*). 12-Deoxywithastramonolide possesses antioxidant and enzyme inhibitory effects<sup>[1]</sup>.

### REFERENCES

---

[1]. Shivraj Hariram Nile, et al. Subcritical water extraction of withanosides and withanolides from ashwagandha (*Withania somnifera* L) and their biological activities. *Food Chem Toxicol.* 2019 Oct;132:110659.

---

**Caution: Product has not been fully validated for medical applications. For research use only.**

Tel: 609-228-6898

Fax: 609-228-5909

E-mail: [tech@MedChemExpress.com](mailto:tech@MedChemExpress.com)

Address: 1 Deer Park Dr, Suite Q, Monmouth Junction, NJ 08852, USA