



SZABO SCANDIC

Part of Europa Biosite

Produktinformation



Forschungsprodukte & Biochemikalien



Zellkultur & Verbrauchsmaterial



Diagnostik & molekulare Diagnostik



Laborgeräte & Service

Weitere Information auf den folgenden Seiten!
See the following pages for more information!



Lieferung & Zahlungsart

siehe unsere [Liefer- und Versandbedingungen](#)

Zuschläge

- Mindermengenzuschlag
- Trockeneiszuschlag
- Gefahrgutzuschlag
- Expressversand

SZABO-SCANDIC HandelsgmbH

Quellenstraße 110, A-1100 Wien

T. +43(0)1 489 3961-0

F. +43(0)1 489 3961-7

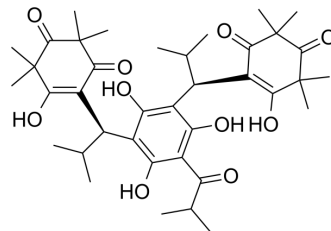
mail@szabo-scandic.com

www.szabo-scandic.com

[linkedin.com/company/szaboscandic](https://www.linkedin.com/company/szaboscandic) 

Myrtucommulone A

Cat. No.:	HY-N7196
CAS No.:	54247-21-1
Molecular Formula:	C ₃₈ H ₅₂ O ₁₀
Molecular Weight:	668.81
Target:	HSP
Pathway:	Cell Cycle/DNA Damage; Metabolic Enzyme/Protease
Storage:	Please store the product under the recommended conditions in the Certificate of Analysis.



BIOLOGICAL ACTIVITY

Description	Myrtucommulone A is a non-prenylated acylphloroglucinol that can be isolated from <i>Myrtus communis</i> (myrtle). Myrtucommulone A interacts with the HSP60 chaperone and inhibits HSP60 chaperone activity. Myrtucommulone A decreases the expression of LRP130, LONP ^{[1][2]} .
In Vitro	Myrtucommulone A (0, 10, 30 μM) decreases the expression of leucine-rich PPRmotif-containing protein (LRP130, Lon protease-like protein (LONP) at 37 °C and 42 °C ^[1] . MCE has not independently confirmed the accuracy of these methods. They are for reference only.

REFERENCES

- [1]. Wiechmann K, et al. Mitochondrial Chaperonin HSP60 Is the Apoptosis-Related Target for Myrtucommulone. *Cell Chem Biol.* 2017 May 18;24(5):614-623.e6.
- [2]. Hans M, et al. Stereoisomeric Composition of Natural Myrtucommulone A. *J Nat Prod.* 2015 Oct 23;78(10):2381-9.

Caution: Product has not been fully validated for medical applications. For research use only.

Tel: 609-228-6898

Fax: 609-228-5909

E-mail: tech@MedChemExpress.com

Address: 1 Deer Park Dr, Suite Q, Monmouth Junction, NJ 08852, USA