



SZABO SCANDIC

Part of Europa Biosite

Produktinformation



Forschungsprodukte & Biochemikalien



Zellkultur & Verbrauchsmaterial



Diagnostik & molekulare Diagnostik



Laborgeräte & Service

Weitere Information auf den folgenden Seiten!
See the following pages for more information!



Lieferung & Zahlungsart

siehe unsere [Liefer- und Versandbedingungen](#)

Zuschläge

- Mindermengenzuschlag
- Trockeneiszuschlag
- Gefahrgutzuschlag
- Expressversand

SZABO-SCANDIC HandelsgmbH

Quellenstraße 110, A-1100 Wien

T. +43(0)1 489 3961-0

F. +43(0)1 489 3961-7

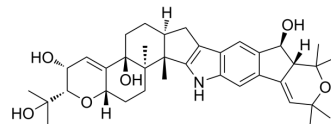
mail@szabo-scandic.com

www.szabo-scandic.com

[linkedin.com/company/szaboscandic](https://www.linkedin.com/company/szaboscandic) 

Janthitrem E

Cat. No.:	HY-N7220
CAS No.:	90986-50-8
Molecular Formula:	C ₃₇ H ₄₉ NO ₆
Molecular Weight:	603.79
Target:	Others
Pathway:	Others
Storage:	Please store the product under the recommended conditions in the Certificate of Analysis.



BIOLOGICAL ACTIVITY

Description

Janthitrem E is a fluorescent tremor metabolite produced by *Penicillium* and associated with sheep ryegrass sickness (RGS). Janthitrem E is an indole diterpene that is closely related to other metabolites such as lolitrems, which is considered the main causative agent of RGS^[1].

REFERENCES

[1]. Structure Elucidation of Janthitrem B, a Tremorgenic Metabolite *Penicillium janthinellum*, and Relative Configuration of the A and Rings of Janthitrems B, E, and F

Caution: Product has not been fully validated for medical applications. For research use only.

Tel: 609-228-6898

Fax: 609-228-5909

E-mail: tech@MedChemExpress.com

Address: 1 Deer Park Dr, Suite Q, Monmouth Junction, NJ 08852, USA