



SZABO SCANDIC

Part of Europa Biosite

Produktinformation



Forschungsprodukte & Biochemikalien



Zellkultur & Verbrauchsmaterial



Diagnostik & molekulare Diagnostik



Laborgeräte & Service

Weitere Information auf den folgenden Seiten!
See the following pages for more information!



Lieferung & Zahlungsart

siehe unsere [Liefer- und Versandbedingungen](#)

Zuschläge

- Mindermengenzuschlag
- Trockeneiszuschlag
- Gefahrgutzuschlag
- Expressversand

SZABO-SCANDIC HandelsgmbH

Quellenstraße 110, A-1100 Wien

T. +43(0)1 489 3961-0

F. +43(0)1 489 3961-7

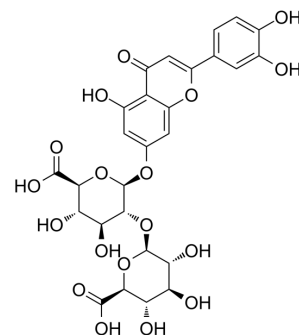
mail@szabo-scandic.com

www.szabo-scandic.com

[linkedin.com/company/szaboscandic](https://www.linkedin.com/company/szaboscandic) 

Luteolin 7-diglucuronide

| | |
|---------------------------|--|
| Cat. No.: | HY-N7269 |
| CAS No.: | 96400-45-2 |
| Molecular Formula: | C ₂₇ H ₂₆ O ₁₈ |
| Molecular Weight: | 638.48 |
| Target: | Others |
| Pathway: | Others |
| Storage: | 4°C, sealed storage, away from moisture and light * In solvent : -80°C, 6 months; -20°C, 1 month (sealed storage, away from moisture and light) |



SOLVENT & SOLUBILITY

In Vitro

DMSO : ≥ 250 mg/mL (391.55 mM)
* "≥" means soluble, but saturation unknown.

| Concentration | Mass | | |
|---------------|-----------|-----------|------------|
| | 1 mg | 5 mg | 10 mg |
| 1 mM | 1.5662 mL | 7.8311 mL | 15.6622 mL |
| 5 mM | 0.3132 mL | 1.5662 mL | 3.1324 mL |
| 10 mM | 0.1566 mL | 0.7831 mL | 1.5662 mL |

Please refer to the solubility information to select the appropriate solvent.

BIOLOGICAL ACTIVITY

Description

Luteolin 7-diglucuronide is the major flavonoid isolated from *Aloysia triphylla* and *Verbena officinalis*^[1].

REFERENCES

[1]. Carnat A1, et al. Luteolin 7-diglucuronide, the major flavonoid compound from *Aloysia triphylla* and *Verbena officinalis*. *Planta Med.* 1995 Oct;61(5):490.

Caution: Product has not been fully validated for medical applications. For research use only.

Tel: 609-228-6898

Fax: 609-228-5909

E-mail: tech@MedChemExpress.com

Address: 1 Deer Park Dr, Suite Q, Monmouth Junction, NJ 08852, USA