



SZABO SCANDIC

Part of Europa Biosite

Produktinformation



Forschungsprodukte & Biochemikalien



Zellkultur & Verbrauchsmaterial



Diagnostik & molekulare Diagnostik



Laborgeräte & Service

Weitere Information auf den folgenden Seiten!
See the following pages for more information!



Lieferung & Zahlungsart

siehe unsere [Liefer- und Versandbedingungen](#)

Zuschläge

- Mindermengenzuschlag
- Trockeneiszuschlag
- Gefahrgutzuschlag
- Expressversand

SZABO-SCANDIC HandelsgmbH

Quellenstraße 110, A-1100 Wien

T. +43(0)1 489 3961-0

F. +43(0)1 489 3961-7

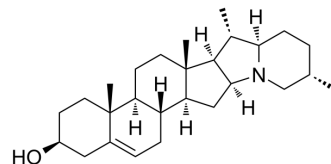
mail@szabo-scandic.com

www.szabo-scandic.com

[linkedin.com/company/szaboscandic](https://www.linkedin.com/company/szaboscandic) 

Solanidine

| | | | |
|--------------------|------------------------------------|-------|----------|
| Cat. No.: | HY-N7271 | | |
| CAS No.: | 80-78-4 | | |
| Molecular Formula: | C ₂₇ H ₄₃ NO | | |
| Molecular Weight: | 397.64 | | |
| Target: | Others | | |
| Pathway: | Others | | |
| Storage: | Powder | -20°C | 3 years |
| | In solvent | -80°C | 6 months |
| | | -20°C | 1 month |



SOLVENT & SOLUBILITY

In Vitro

Ethanol : 3.57 mg/mL (8.98 mM; ultrasonic and warming and heat to 60°C)

| Concentration | Mass | | |
|---------------|-----------|------------|------------|
| | 1 mg | 5 mg | 10 mg |
| 1 mM | 2.5148 mL | 12.5742 mL | 25.1484 mL |
| 5 mM | 0.5030 mL | 2.5148 mL | 5.0297 mL |
| 10 mM | --- | --- | --- |

Please refer to the solubility information to select the appropriate solvent.

BIOLOGICAL ACTIVITY

Description

Solanidine is a cholestane alkaloid isolated from several potato species including *Solanum demissum*, *Solanum acaule*, and *Solanum tuberosum*. Solanidine can inhibit proliferation and exhibit obvious antitumor effect^[1].

REFERENCES

[1]. Zhang ZD, et al. Synthesis of Demissidine and Solanidine. *Org Lett.* 2016 Jun 17;18(12):3038-40.

Caution: Product has not been fully validated for medical applications. For research use only.

Tel: 609-228-6898

Fax: 609-228-5909

E-mail: tech@MedChemExpress.com

Address: 1 Deer Park Dr, Suite Q, Monmouth Junction, NJ 08852, USA