



SZABO SCANDIC

Part of Europa Biosite

Produktinformation



Forschungsprodukte & Biochemikalien



Zellkultur & Verbrauchsmaterial



Diagnostik & molekulare Diagnostik



Laborgeräte & Service

Weitere Information auf den folgenden Seiten!
See the following pages for more information!



Lieferung & Zahlungsart

siehe unsere [Liefer- und Versandbedingungen](#)

Zuschläge

- Mindermengenzuschlag
- Trockeneiszuschlag
- Gefahrgutzuschlag
- Expressversand

SZABO-SCANDIC HandelsgmbH

Quellenstraße 110, A-1100 Wien

T. +43(0)1 489 3961-0

F. +43(0)1 489 3961-7

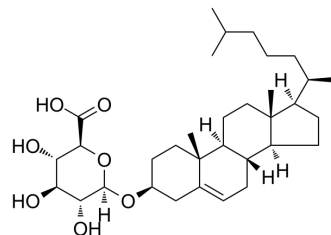
mail@szabo-scandic.com

www.szabo-scandic.com

[linkedin.com/company/szaboscandic](https://www.linkedin.com/company/szaboscandic) 

Cholesterol glucuronide

Cat. No.:	HY-N7390
CAS No.:	17435-78-8
Molecular Formula:	C ₃₃ H ₅₄ O ₇
Molecular Weight:	562.78
Target:	Endogenous Metabolite
Pathway:	Metabolic Enzyme/Protease
Storage:	Please store the product under the recommended conditions in the Certificate of Analysis.



BIOLOGICAL ACTIVITY

Description	Cholesterol glucuronide is an endogenous metabolite of lipid generated in the liver by UDP glucuonyltransferase ^{[1][2]} .
IC ₅₀ & Target	Human Endogenous Metabolite
In Vivo	The content of Cholesterol glucuronide in the normal liver is higher than the reported value for plasma (18 µg/g vs 6 µg/mL). Cholesterol glucuronide is synthesized in the liver and some of it enters the bloodstream. Probably the rest goes into the bile, like the other glucuronides ^[1] . MCE has not independently confirmed the accuracy of these methods. They are for reference only.

REFERENCES

[1]. Hara A, et al. Isolation and determination of cholesterol glucuronide in human liver. *Lipids*. 1982 Aug;17(8):515-8.

[2]. Wade AP. The estimation of cholesterol sulphate and cholesterol glucuronide in plasma. *Clin Chim Acta*. 1970 Jan;27(1):109-16.

Caution: Product has not been fully validated for medical applications. For research use only.

Tel: 609-228-6898

Fax: 609-228-5909

E-mail: tech@MedChemExpress.com

Address: 1 Deer Park Dr, Suite Q, Monmouth Junction, NJ 08852, USA