



SZABO SCANDIC

Part of Europa Biosite

Produktinformation



Forschungsprodukte & Biochemikalien



Zellkultur & Verbrauchsmaterial



Diagnostik & molekulare Diagnostik



Laborgeräte & Service

Weitere Information auf den folgenden Seiten!
See the following pages for more information!



Lieferung & Zahlungsart

siehe unsere [Liefer- und Versandbedingungen](#)

Zuschläge

- Mindermengenzuschlag
- Trockeneiszuschlag
- Gefahrgutzuschlag
- Expressversand

SZABO-SCANDIC HandelsgmbH

Quellenstraße 110, A-1100 Wien

T. +43(0)1 489 3961-0

F. +43(0)1 489 3961-7

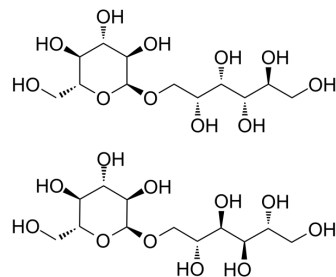
mail@szabo-scandic.com

www.szabo-scandic.com

[linkedin.com/company/szaboscandic](https://www.linkedin.com/company/szaboscandic) 

Isomalt

Cat. No.:	HY-N7393		
CAS No.:	64519-82-0		
Molecular Formula:	C ₁₂ H ₂₄ O ₁₁		
Molecular Weight:	344.31		
Target:	Lactate Dehydrogenase		
Pathway:	Metabolic Enzyme/Protease		
Storage:	Powder	-20°C	3 years
		4°C	2 years
	In solvent	-80°C	6 months
		-20°C	1 month



SOLVENT & SOLUBILITY

In Vitro	H ₂ O : 250 mg/mL (726.09 mM; Need ultrasonic)				
		Solvent Concentration	Mass 1 mg	5 mg	10 mg
	Preparing Stock Solutions	1 mM	2.9044 mL	14.5218 mL	29.0436 mL
		5 mM	0.5809 mL	2.9044 mL	5.8087 mL
10 mM		0.2904 mL	1.4522 mL	2.9044 mL	
Please refer to the solubility information to select the appropriate solvent.					
In Vivo	1. Add each solvent one by one: PBS Solubility: 100 mg/mL (290.44 mM); Clear solution; Need ultrasonic				

BIOLOGICAL ACTIVITY

Description	Isomalt (Palatinitol), a well-tolerated, non-toxic polyol and a protein-stabilizing excipient, stabilizes lactate dehydrogenase (LDH) moderately during freeze-drying, and performs better during storage. Isomalt is traditionally used as a sweetening agent in the food industry and as a tableting excipient for pharmaceutical purposes ^[1] .
In Vivo	The chronic toxicity of orally administered isomalt as a part of diet has been studied in animals and it was found to be a safe substance. It did not affect the mortality rate of the animals, and there was no evidence of carcinogenicity, or adverse effects on fertility, reproductive performance or development ^[1] . MCE has not independently confirmed the accuracy of these methods. They are for reference only.

REFERENCES

Caution: Product has not been fully validated for medical applications. For research use only.

Tel: 609-228-6898

Fax: 609-228-5909

E-mail: tech@MedChemExpress.com

Address: 1 Deer Park Dr, Suite Q, Monmouth Junction, NJ 08852, USA