



SZABO SCANDIC

Part of Europa Biosite

Produktinformation



Forschungsprodukte & Biochemikalien



Zellkultur & Verbrauchsmaterial



Diagnostik & molekulare Diagnostik



Laborgeräte & Service

Weitere Information auf den folgenden Seiten!
See the following pages for more information!



Lieferung & Zahlungsart

siehe unsere [Liefer- und Versandbedingungen](#)

Zuschläge

- Mindermengenzuschlag
- Trockeneiszuschlag
- Gefahrgutzuschlag
- Expressversand

SZABO-SCANDIC HandelsgmbH

Quellenstraße 110, A-1100 Wien

T. +43(0)1 489 3961-0

F. +43(0)1 489 3961-7

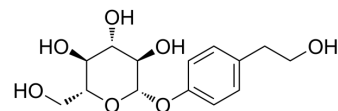
mail@szabo-scandic.com

www.szabo-scandic.com

[linkedin.com/company/szaboscandic](https://www.linkedin.com/company/szaboscandic) 

Icariside D2

Cat. No.:	HY-N7450
CAS No.:	38954-02-8
Molecular Formula:	C ₁₄ H ₂₀ O ₇
Molecular Weight:	300.3
Target:	Angiotensin-converting Enzyme (ACE); Apoptosis; HIV
Pathway:	Metabolic Enzyme/Protease; Apoptosis; Anti-infection
Storage:	4°C, protect from light * In solvent : -80°C, 6 months; -20°C, 1 month (protect from light)



BIOLOGICAL ACTIVITY

Description	Icariside D2, isolated from <i>Annona glabra</i> fruit, inhibits angiotensin-converting enzyme. Icariside D2 shows significant cytotoxic activity on the HL-60 cell line with the IC ₅₀ value of 9.0 ± 1.0 μM. Icariside D2 induces apoptosis ^{[1][2]} .
In Vitro	Icariside D2 3 induces apoptosis via alteration of expression of apoptosis-related proteins and decreases phosphorylation of AKT in HL-60 cells ^[1] . Icariside D2 exhibits anti-inflammatory and anti-HIV activity ^[3] . MCE has not independently confirmed the accuracy of these methods. They are for reference only.

REFERENCES

- [1]. Nguyen Thi Thu Hien, et al. Chemical Constituents of the *Annona Glabra* Fruit and Their Cytotoxic Activity. *Pharm Biol.* 2015;53(11):1602-7.
- [2]. Xue Liu, et al. Metabolic Engineering *Escherichia coli* for Efficient Production of Icariside D2. *Biotechnol Biofuels.* 2019 Nov 6;12:261.
- [3]. Jin-YuLi, et al. Three new acylated prenylflavonol glycosides from *Epimedium koreanum*. *Phytochemistry Letters* Volume 17, September 2016, Pages 206-212.

Caution: Product has not been fully validated for medical applications. For research use only.

Tel: 609-228-6898

Fax: 609-228-5909

E-mail: tech@MedChemExpress.com

Address: 1 Deer Park Dr, Suite Q, Monmouth Junction, NJ 08852, USA