



SZABO SCANDIC

Part of Europa Biosite

Produktinformation



Forschungsprodukte & Biochemikalien



Zellkultur & Verbrauchsmaterial



Diagnostik & molekulare Diagnostik



Laborgeräte & Service

Weitere Information auf den folgenden Seiten!
See the following pages for more information!



Lieferung & Zahlungsart

siehe unsere [Liefer- und Versandbedingungen](#)

Zuschläge

- Mindermengenzuschlag
- Trockeneiszuschlag
- Gefahrgutzuschlag
- Expressversand

SZABO-SCANDIC HandelsgmbH

Quellenstraße 110, A-1100 Wien

T. +43(0)1 489 3961-0

F. +43(0)1 489 3961-7

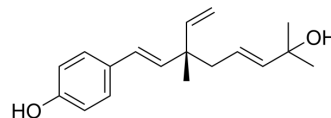
mail@szabo-scandic.com

www.szabo-scandic.com

[linkedin.com/company/szaboscandic](https://www.linkedin.com/company/szaboscandic) 

13-Hydroxyisobakuchiol

Cat. No.:	HY-N7506
CAS No.:	178765-49-6
Molecular Formula:	C ₁₈ H ₂₄ O ₂
Molecular Weight:	272.38
Target:	Monoamine Transporter; Dopamine Transporter
Pathway:	Membrane Transporter/Ion Channel; Neuronal Signaling
Storage:	Please store the product under the recommended conditions in the Certificate of Analysis.



BIOLOGICAL ACTIVITY

Description	Hydroxyisobakuchiol (Delta3,2-Hydroxybakuchiol), an analog of Bakuchiol (HY-N0235) isolated from <i>Psoralea corylifolia</i> (L.), is a potent monoamine transporter inhibitor. 13-Hydroxyisobakuchiol is more selective for the dopamine transporter (DAT) (IC ₅₀ =0.58 μM) and norepinephrine transporter (NET) (IC ₅₀ =0.69 μM) than for the serotonin transporter (SERT) (IC ₅₀ =312.02 μM). 13-Hydroxyisobakuchiol has the potential for the research of disorders such as Parkinson's disease and depression ^[1] .
IC ₅₀ & Target	IC ₅₀ : 0.58 μM (dopamine transporter) IC ₅₀ : 0.69 μM (norepinephrine transporter) ^[1]

REFERENCES

[1]. Gang Zhao, et al. Bakuchiol analogs inhibit monoamine transporters and regulate monoaminergic functions. *Biochem Pharmacol.* 2008 May 1;75(9):1835-47.

Caution: Product has not been fully validated for medical applications. For research use only.

Tel: 609-228-6898

Fax: 609-228-5909

E-mail: tech@MedChemExpress.com

Address: 1 Deer Park Dr, Suite Q, Monmouth Junction, NJ 08852, USA