



# SZABO SCANDIC

Part of Europa Biosite

## Produktinformation



Forschungsprodukte & Biochemikalien



Zellkultur & Verbrauchsmaterial



Diagnostik & molekulare Diagnostik



Laborgeräte & Service

Weitere Information auf den folgenden Seiten!  
See the following pages for more information!



### Lieferung & Zahlungsart

siehe unsere [Liefer- und Versandbedingungen](#)

### Zuschläge

- Mindermengenzuschlag
- Trockeneiszuschlag
- Gefahrgutzuschlag
- Expressversand

### SZABO-SCANDIC HandelsgmbH

Quellenstraße 110, A-1100 Wien

T. +43(0)1 489 3961-0

F. +43(0)1 489 3961-7

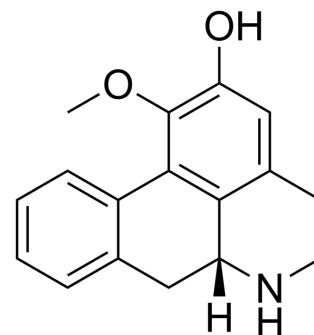
[mail@szabo-scandic.com](mailto:mail@szabo-scandic.com)

[www.szabo-scandic.com](http://www.szabo-scandic.com)

[linkedin.com/company/szaboscandic](https://www.linkedin.com/company/szaboscandic) 

## Asimilobine

|                           |                                                                                           |
|---------------------------|-------------------------------------------------------------------------------------------|
| <b>Cat. No.:</b>          | HY-N7512                                                                                  |
| <b>CAS No.:</b>           | 6871-21-2                                                                                 |
| <b>Molecular Formula:</b> | C <sub>17</sub> H <sub>17</sub> NO <sub>2</sub>                                           |
| <b>Molecular Weight:</b>  | 267.32                                                                                    |
| <b>Target:</b>            | Dopamine Receptor; 5-HT Receptor; Parasite                                                |
| <b>Pathway:</b>           | GPCR/G Protein; Neuronal Signaling; Anti-infection                                        |
| <b>Storage:</b>           | Please store the product under the recommended conditions in the Certificate of Analysis. |



### BIOLOGICAL ACTIVITY

|                                     |                                                                                                                                                                                                                                                                                                                                                                                                                                                                                                                                                                    |                   |                       |
|-------------------------------------|--------------------------------------------------------------------------------------------------------------------------------------------------------------------------------------------------------------------------------------------------------------------------------------------------------------------------------------------------------------------------------------------------------------------------------------------------------------------------------------------------------------------------------------------------------------------|-------------------|-----------------------|
| <b>Description</b>                  | Asimilobine is an aporphine isoquinoline alkaloid isolated from plant species of <i>Magnolia obobata</i> Thun. Asimilobine is a dopamine biosynthesis inhibitor and a serotonergic receptor antagonist. Asimilobine shows an antimalarial and anti-cancer activity <sup>[1][2]</sup> .                                                                                                                                                                                                                                                                             |                   |                       |
| <b>IC<sub>50</sub> &amp; Target</b> | Plasmodium                                                                                                                                                                                                                                                                                                                                                                                                                                                                                                                                                         | Dopamine Receptor | serotonergic receptor |
| <b>In Vitro</b>                     | <p>Asimilobine (0.05-0.2 μM; for 24 h) shows a significant inhibition of intracellular dopamine levels in a concentration-dependent manner with an IC<sub>50</sub> value of 0.13 μM<sup>[2]</sup>.</p> <p>Asimilobine (0.15 μM) inhibits tyrosine hydroxylase (TH) and aromatic L-amino acid decarboxylase (AADC) activities at 24 h<sup>[2]</sup>.</p> <p>Asimilobine also decreases TH mRNA levels and intracellular cyclic AMP levels<sup>[2]</sup>.</p> <p>MCE has not independently confirmed the accuracy of these methods. They are for reference only.</p> |                   |                       |

### REFERENCES

- [1]. N Shoji, et al. Asimilobine and Lirinidine, Serotonergic Receptor Antagonists, From *Nelumbo Nucifera*. *J Nat Prod.* Jul-Aug 1987;50(4):773-4.
- [2]. Chun-Mei Jin, et al. Effects of Asimilobine on Dopamine Biosynthesis and L-DOPA-induced Cytotoxicity in PC12 Cells. *J Asian Nat Prod Res.* Jul-Aug 2008;10(7-8):747-55.

---

**Caution: Product has not been fully validated for medical applications. For research use only.**

Tel: 609-228-6898

Fax: 609-228-5909

E-mail: [tech@MedChemExpress.com](mailto:tech@MedChemExpress.com)

Address: 1 Deer Park Dr, Suite Q, Monmouth Junction, NJ 08852, USA