



# SZABO SCANDIC

Part of Europa Biosite

## Produktinformation



Forschungsprodukte & Biochemikalien



Zellkultur & Verbrauchsmaterial



Diagnostik & molekulare Diagnostik



Laborgeräte & Service

Weitere Information auf den folgenden Seiten!  
See the following pages for more information!



### Lieferung & Zahlungsart

siehe unsere [Liefer- und Versandbedingungen](#)

### Zuschläge

- Mindermengenzuschlag
- Trockeneiszuschlag
- Gefahrgutzuschlag
- Expressversand

### SZABO-SCANDIC HandelsgmbH

Quellenstraße 110, A-1100 Wien

T. +43(0)1 489 3961-0

F. +43(0)1 489 3961-7

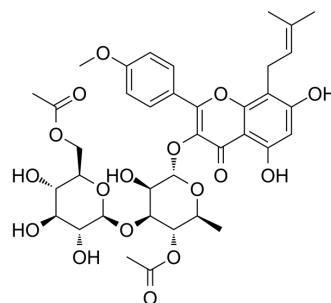
[mail@szabo-scandic.com](mailto:mail@szabo-scandic.com)

[www.szabo-scandic.com](http://www.szabo-scandic.com)

[linkedin.com/company/szaboscandic](https://www.linkedin.com/company/szaboscandic) 

## Epimedoside

Cat. No.:	HY-N7597
CAS No.:	106441-31-0
Molecular Formula:	C <sub>37</sub> H <sub>44</sub> O <sub>17</sub>
Molecular Weight:	760.74
Target:	Others
Pathway:	Others
Storage:	4°C, protect from light * In solvent : -80°C, 6 months; -20°C, 1 month (protect from light)



### SOLVENT & SOLUBILITY

#### In Vitro

DMSO : 100 mg/mL (131.45 mM; Need ultrasonic)

Concentration	Mass			
	1 mg	5 mg	10 mg	
1 mM	1.3145 mL	6.5725 mL	13.1451 mL	
5 mM	0.2629 mL	1.3145 mL	2.6290 mL	
10 mM	0.1315 mL	0.6573 mL	1.3145 mL	

Please refer to the solubility information to select the appropriate solvent.

### BIOLOGICAL ACTIVITY

#### Description

Epimedoside is a flavonol glycoside, isolated from the aerial parts of *Epimedium koreanum* Nakai (Berberidaceae)<sup>[1]</sup>.

### REFERENCES

[1]. P. SUN, et al. ChemInform Abstract: Studies on the Constituents of *Epimedium koreanum*. Part 3.. ChemInform. 2010, Vol.29, No.28, p.no.

---

**Caution: Product has not been fully validated for medical applications. For research use only.**

Tel: 609-228-6898

Fax: 609-228-5909

E-mail: [tech@MedChemExpress.com](mailto:tech@MedChemExpress.com)

Address: 1 Deer Park Dr, Suite Q, Monmouth Junction, NJ 08852, USA