



SZABO SCANDIC

Part of Europa Biosite

Produktinformation



Forschungsprodukte & Biochemikalien



Zellkultur & Verbrauchsmaterial



Diagnostik & molekulare Diagnostik



Laborgeräte & Service

Weitere Information auf den folgenden Seiten!
See the following pages for more information!



Lieferung & Zahlungsart

siehe unsere [Liefer- und Versandbedingungen](#)

Zuschläge

- Mindermengenzuschlag
- Trockeneiszuschlag
- Gefahrgutzuschlag
- Expressversand

SZABO-SCANDIC HandelsgmbH

Quellenstraße 110, A-1100 Wien

T. +43(0)1 489 3961-0

F. +43(0)1 489 3961-7

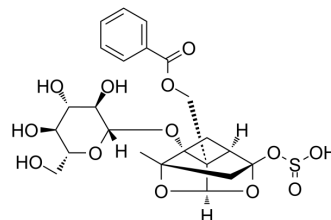
mail@szabo-scandic.com

www.szabo-scandic.com

[linkedin.com/company/szaboscandic](https://www.linkedin.com/company/szaboscandic) 

Paeoniflorin sulfite

Cat. No.:	HY-N7639
CAS No.:	1146967-98-7
Molecular Formula:	C ₂₃ H ₂₈ O ₁₃ S
Molecular Weight:	544.53
Target:	Others
Pathway:	Others
Storage:	4°C, protect from light * In solvent : -80°C, 6 months; -20°C, 1 month (protect from light)



SOLVENT & SOLUBILITY

In Vitro	DMSO : 100 mg/mL (183.64 mM; Need ultrasonic)						
	Preparing Stock Solutions	Solvent Concentration	Mass	1 mg	5 mg	10 mg	
				1 mM	1.8364 mL	9.1822 mL	18.3645 mL
				5 mM	0.3673 mL	1.8364 mL	3.6729 mL
				10 mM	0.1836 mL	0.9182 mL	1.8364 mL
Please refer to the solubility information to select the appropriate solvent.							
In Vivo	1. Add each solvent one by one: 10% DMSO >> 40% PEG300 >> 5% Tween-80 >> 45% saline Solubility: ≥ 2.5 mg/mL (4.59 mM); Clear solution						
	2. Add each solvent one by one: 10% DMSO >> 90% corn oil Solubility: ≥ 2.5 mg/mL (4.59 mM); Clear solution						

BIOLOGICAL ACTIVITY

Description	Paeoniflorin, a main component of Paeoniae Radix Alba, could be transformed into Paeoniflorin sulfite during sulfur-fumigation of Paeoniae Radix Alba ^[1] .
-------------	--

REFERENCES

[1]. Ke Pei, et al. Ultra-high-performance liquid chromatography-quadrupole/time of flight mass spectrometry combined with statistical analysis for rapidly revealing the influence of sulfur-fumigated Paeoniae Radix Alba on the chemical constituents of Si Wu Tang. Analytical Methods. 2015.

Caution: Product has not been fully validated for medical applications. For research use only.

Tel: 609-228-6898

Fax: 609-228-5909

E-mail: tech@MedChemExpress.com

Address: 1 Deer Park Dr, Suite Q, Monmouth Junction, NJ 08852, USA