



SZABO SCANDIC

Part of Europa Biosite

Produktinformation



Forschungsprodukte & Biochemikalien



Zellkultur & Verbrauchsmaterial



Diagnostik & molekulare Diagnostik



Laborgeräte & Service

Weitere Information auf den folgenden Seiten!
See the following pages for more information!



Lieferung & Zahlungsart

siehe unsere [Liefer- und Versandbedingungen](#)

Zuschläge

- Mindermengenzuschlag
- Trockeneiszuschlag
- Gefahrgutzuschlag
- Expressversand

SZABO-SCANDIC HandelsgmbH

Quellenstraße 110, A-1100 Wien

T. +43(0)1 489 3961-0

F. +43(0)1 489 3961-7

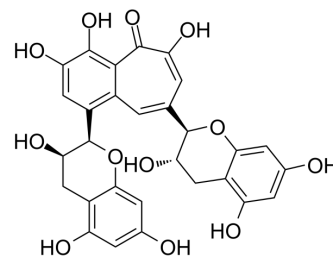
mail@szabo-scandic.com

www.szabo-scandic.com

[linkedin.com/company/szaboscandic](https://www.linkedin.com/company/szaboscandic) 

Isotheaflavin

Cat. No.:	HY-N7664
CAS No.:	31701-93-6
Molecular Formula:	C ₂₉ H ₂₄ O ₁₂
Molecular Weight:	564.49
Target:	Others
Pathway:	Others
Storage:	-20°C, protect from light * In solvent : -80°C, 6 months; -20°C, 1 month (protect from light)



SOLVENT & SOLUBILITY

In Vitro

DMSO : 100 mg/mL (177.15 mM; Need ultrasonic)

Concentration	Mass			
	1 mg	5 mg	10 mg	
1 mM	1.7715 mL	8.8576 mL	17.7151 mL	
5 mM	0.3543 mL	1.7715 mL	3.5430 mL	
10 mM	0.1772 mL	0.8858 mL	1.7715 mL	

Please refer to the solubility information to select the appropriate solvent.

BIOLOGICAL ACTIVITY

Description

Isotheaflavin is one of antioxidant polyphenols in black tea^[1].

REFERENCES

[1]. D.T.Coxon, et al. Isotheaflavin. A new black tea pigment. Tetrahedron Letters. Volume 11, Issue 60, 1970, Pages 5241-5246.

Caution: Product has not been fully validated for medical applications. For research use only.

Tel: 609-228-6898

Fax: 609-228-5909

E-mail: tech@MedChemExpress.com

Address: 1 Deer Park Dr, Suite Q, Monmouth Junction, NJ 08852, USA