



# SZABO SCANDIC

Part of Europa Biosite

## Produktinformation



Forschungsprodukte & Biochemikalien



Zellkultur & Verbrauchsmaterial



Diagnostik & molekulare Diagnostik



Laborgeräte & Service

Weitere Information auf den folgenden Seiten!  
See the following pages for more information!



### Lieferung & Zahlungsart

siehe unsere [Liefer- und Versandbedingungen](#)

### Zuschläge

- Mindermengenzuschlag
- Trockeneiszuschlag
- Gefahrgutzuschlag
- Expressversand

### SZABO-SCANDIC HandelsgmbH

Quellenstraße 110, A-1100 Wien

T. +43(0)1 489 3961-0

F. +43(0)1 489 3961-7

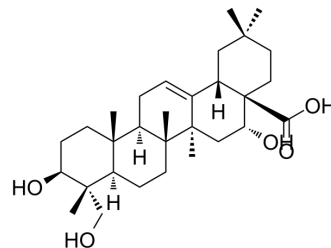
[mail@szabo-scandic.com](mailto:mail@szabo-scandic.com)

[www.szabo-scandic.com](http://www.szabo-scandic.com)

[linkedin.com/company/szaboscandic](https://www.linkedin.com/company/szaboscandic) 

## Caulophyllogenin

Cat. No.:	HY-N7687
CAS No.:	52936-64-8
Molecular Formula:	C <sub>30</sub> H <sub>48</sub> O <sub>5</sub>
Molecular Weight:	488.7
Target:	PPAR
Pathway:	Cell Cycle/DNA Damage
Storage:	Please store the product under the recommended conditions in the Certificate of Analysis.



### BIOLOGICAL ACTIVITY

Description	Caulophyllogenin is a triterpene saponin extracted from <i>M. polymorpha</i> . Caulophyllogenin is a partial PPAR $\gamma$ agonist, with an EC <sub>50</sub> of 12.6 $\mu$ M. Caulophyllogenin can be used for the research of type-2 diabetes, obesity, metabolic syndrome and inflammation <sup>[1][2]</sup> .
IC <sub>50</sub> & Target	PPAR $\gamma$ 12.6 $\mu$ M (EC50)

### REFERENCES

- [1]. Montanari R, et, al. Screening of saponins and sapogenins from *Medicago* species as potential PPAR $\gamma$  agonists and X-ray structure of the complex PPAR $\gamma$ /caulophyllogenin. *Sci Rep.* 2016 Jun 10; 6:27658.
- [2]. Zhang Y, et, al. Studies on cytotoxic triterpene saponins from the leaves of *Aralia elata*. *Food Chem.* 2013 May 1;138(1):208-13.

**Caution: Product has not been fully validated for medical applications. For research use only.**

Tel: 609-228-6898

Fax: 609-228-5909

E-mail: tech@MedChemExpress.com

Address: 1 Deer Park Dr, Suite Q, Monmouth Junction, NJ 08852, USA