



# SZABO SCANDIC

Part of Europa Biosite

## Produktinformation



Forschungsprodukte & Biochemikalien



Zellkultur & Verbrauchsmaterial



Diagnostik & molekulare Diagnostik



Laborgeräte & Service

Weitere Information auf den folgenden Seiten!  
See the following pages for more information!



### Lieferung & Zahlungsart

siehe unsere [Liefer- und Versandbedingungen](#)

### Zuschläge

- Mindermengenzuschlag
- Trockeneiszuschlag
- Gefahrgutzuschlag
- Expressversand

### SZABO-SCANDIC HandelsgmbH

Quellenstraße 110, A-1100 Wien

T. +43(0)1 489 3961-0

F. +43(0)1 489 3961-7

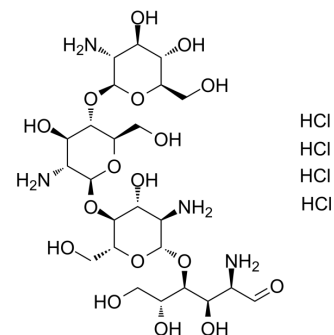
[mail@szabo-scandic.com](mailto:mail@szabo-scandic.com)

[www.szabo-scandic.com](http://www.szabo-scandic.com)

[linkedin.com/company/szaboscandic](https://www.linkedin.com/company/szaboscandic) 

## Chitotetraose tetrahydrochloride

<b>Cat. No.:</b>	HY-N7697
<b>CAS No.:</b>	117399-50-5
<b>Molecular Formula:</b>	C <sub>24</sub> H <sub>50</sub> Cl <sub>4</sub> N <sub>4</sub> O <sub>17</sub>
<b>Molecular Weight:</b>	808.48
<b>Target:</b>	Others
<b>Pathway:</b>	Others
<b>Storage:</b>	4°C, sealed storage, away from moisture * In solvent : -80°C, 6 months; -20°C, 1 month (sealed storage, away from moisture)



### SOLVENT & SOLUBILITY

#### In Vitro

H<sub>2</sub>O : 50 mg/mL (61.84 mM; Need ultrasonic)

Preparing Stock Solutions	Solvent		Mass		
	Concentration		1 mg	5 mg	10 mg
	1 mM		1.2369 mL	6.1844 mL	12.3689 mL
	5 mM		0.2474 mL	1.2369 mL	2.4738 mL
	10 mM		0.1237 mL	0.6184 mL	1.2369 mL

Please refer to the solubility information to select the appropriate solvent.

### BIOLOGICAL ACTIVITY

#### Description

Chitotetraose tetrahydrochloride is an arbuscular mycorrhizal (AM) fungal short-chain chitin oligomer. Chitotetraose tetrahydrochloride activates the AM fungal-dependent conserved symbiosis signaling pathway (CSSP) in actinorhizal plant species<sup>[1]</sup>.

### REFERENCES

[1]. Mireille Chabaud, et al. Chitotetraose activates the fungal-dependent endosymbiotic signaling pathway in actinorhizal plant species. PLoS One. 2019 Oct 10;14(10):e0223149.

**Caution: Product has not been fully validated for medical applications. For research use only.**

Tel: 609-228-6898

Fax: 609-228-5909

E-mail: tech@MedChemExpress.com

Address: 1 Deer Park Dr, Suite Q, Monmouth Junction, NJ 08852, USA