



SZABO SCANDIC

Part of Europa Biosite

Produktinformation



Forschungsprodukte & Biochemikalien



Zellkultur & Verbrauchsmaterial



Diagnostik & molekulare Diagnostik



Laborgeräte & Service

Weitere Information auf den folgenden Seiten!
See the following pages for more information!



Lieferung & Zahlungsart

siehe unsere [Liefer- und Versandbedingungen](#)

Zuschläge

- Mindermengenzuschlag
- Trockeneiszuschlag
- Gefahrgutzuschlag
- Expressversand

SZABO-SCANDIC HandelsgmbH

Quellenstraße 110, A-1100 Wien

T. +43(0)1 489 3961-0

F. +43(0)1 489 3961-7

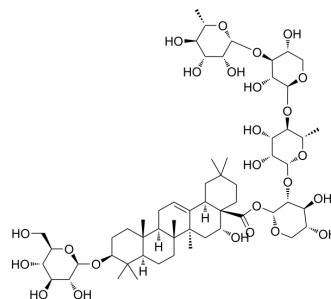
mail@szabo-scandic.com

www.szabo-scandic.com

[linkedin.com/company/szaboscandic](https://www.linkedin.com/company/szaboscandic) 

Chrysanthellin A

Cat. No.:	HY-N7762
CAS No.:	73039-13-1
Molecular Formula:	C ₅₈ H ₉₄ O ₂₅
Molecular Weight:	1191.35
Target:	Others
Pathway:	Others
Storage:	Please store the product under the recommended conditions in the Certificate of Analysis.



BIOLOGICAL ACTIVITY

Description

Chrysanthellin A is the main saponin-based compound from the extract of *Chrysanthellum americanum*. Chrysanthellin A can be used in the reserach of digestive impairments^[1].

REFERENCES

[1]. Roxana Cojocariu, et al. Antioxidant Capacity and Behavioral Relevance of a Polyphenolic Extract of *Chrysanthellum americanum* in a Rat Model of Irritable Bowel Syndrome. *Oxidative Medicine and Cellular Longevity*. 2019.

Caution: Product has not been fully validated for medical applications. For research use only.

Tel: 609-228-6898

Fax: 609-228-5909

E-mail: tech@MedChemExpress.com

Address: 1 Deer Park Dr, Suite Q, Monmouth Junction, NJ 08852, USA